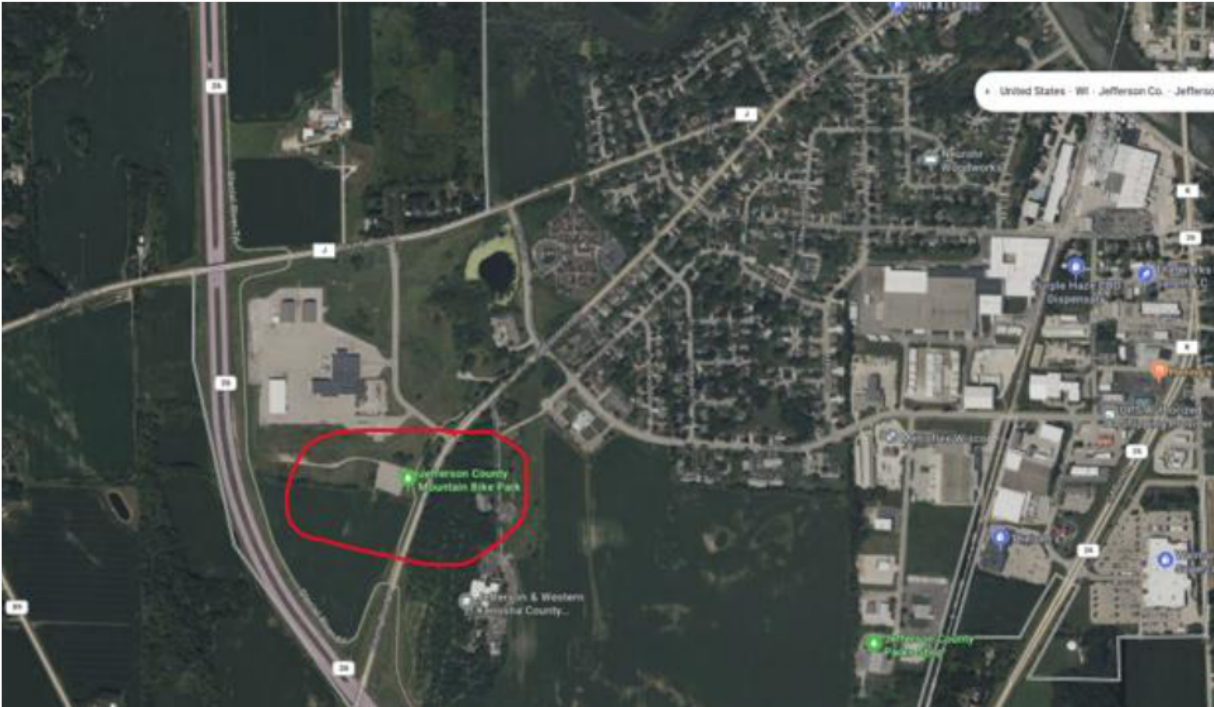


As our office continues to take calls from the residents across Jefferson County, I have worked with Jefferson County Highway Commissioner to put sandbags and sand out in the Jefferson County Mountain Bike parking lot. It is located right outside of the main Jefferson County highway shop. **Please push this out to your residents that sandbags and sand are available.** They will have to bring their own shovels to fill them.



I have attached a video on how to properly fill a sandbag and build a wall:



Here is a link to the Wisconsin DNR with flood related resources: .

<https://dnr.wisconsin.gov/emergency/FloodCoping.html>

*Tracy Hameau*

Tracy Hameau, WCEM/NEMBA/NEMAA  
Jefferson County Emergency Management Director  
Wisconsin Emergency Management Association Vice-President  
920-674-7450 – Office  
[thameau@jeffersoncountywi.gov](mailto:thameau@jeffersoncountywi.gov)

107 E. Washington St.  
Jefferson, WI 53549