



136 North Monroe Street  
Waterloo, WI 53594-1198  
Phone: (920) 478-3025  
Fax: (920) 478-2021  
www.waterloowi.us

## PUBLIC NOTICE OF A COMMITTEE MEETING OF THE COMMON COUNCIL OF THE CITY OF WATERLOO

Pursuant to Section 19.84 Wisconsin Statutes, notice is hereby given to the public & news media, that the following meeting will be held:

**COMMITTEE:** PUBLIC WORKS & PROPERTY COMMITTEE  
**DATE:** September 2, 2021  
**TIME:** 6:00 p.m.  
**LOCATION:** Municipal Building Council Chambers, 136 N. Monroe Street (in-person or remote)

### REMOTE ACCESS DETAILS

Join Zoom Meeting: <https://us02web.zoom.us/j/82462012145?pwd=YTRkbDVMREs5MmdFajYxZG1Wb3VCZz09>

Meeting ID: 824 6201 2145 Passcode: 796252

Dial-in by Phone: +1 312 626 6799 US (Chicago)  
Meeting ID: 824 6201 2145 Passcode: 796252

1. CALL TO ORDER AND ROLL CALL
2. APPROVAL OF MEETING MINUTES – August 5, 2021
3. CITIZEN INPUT / PUBLIC COMMENT
4. PROJECT OVERSIGHT & UPDATES
  - i. Assessor's 2020-2021 Property Revaluation
  - ii. Project Treyburn Residential Development
  - iii. 203 East Madison Street
  - iv. Adams Street Reconstruction
  - v. Remnant Land Project, Follow-Ups
5. NEW BUSINESS
  - a. Ordinance #2021-06 Creating Chapter 354 Wireless Communications Facilities in the Right-of-Way (referred by City Council and amended per Alder Weihert emails)
  - b. 2021 Pavement Ratings Presentation, Mitch Leisses Kunkel Engineering Group
  - c. Street And Utility Improvements: Out-Year Project Plans, Recommending An Updated Plan To The City Council
  - d. Waterloo Fee Schedule, Review And Recommendations Relating To Public Works Department Services Charges And Similar
  - e. Review And Recommendations: Municipal Facility Needs (Multi-Year)
  - f. Authorizing Kunkel Engineering Group To Start Field Work And Reconstruct Plans For Leschinger Street Between Jefferson Street And South Washington Street
  - g. City Of Waterloo Land Located Between 136 North Monroe Street (Municipal Building) And 124 North Monroe Street (Milo H Sillman Trust), Review And Action Relating To Municipal-Property Owner Discussions
6. UNFINISHED BUSINESS
  - a. DPW 2022 Budget Submittal, Operational Capital Budget Submittal
7. FUTURE AGENDA ITEMS AND ANNOUNCEMENTS
  - a. Committee Calendar
8. ADJOURNMENT

Mo Hansen,  
Clerk/Treasurer

\*\*\* Also, on Council Agenda. See Council materials for documentation.

Committee Members: Petts Weihert with one vacancy

posted, e-mailed & distributed: 08/30/2021

PLEASE NOTE: IT IS POSSIBLE THAT MEMBERS OF AND POSSIBLY A QUORUM OF MEMBERS OF OTHER GOVERNMENTAL BODIES OF THE MUNICIPALITY MAY BE IN ATTENDANCE AT THE ABOVE MEETING(S) TO GATHER INFORMATION. NO ACTION WILL BE TAKEN BY ANY GOVERNMENTAL BODY OTHER THAN THAT SPECIFICALLY NOTICED. ALSO, UPON REASONABLE NOTICE, EFFORTS WILL BE MADE TO ACCOMMODATE THE NEEDS OF DISABLED INDIVIDUALS THROUGH APPROPRIATE AIDS AND SERVICES. FOR ADDITIONAL INFORMATION OR TO REQUEST SUCH SERVICES PLEASE CONTACT THE CLERK'S OFFICE AT THE ABOVE LOCATION.

**CITY OF WATERLOO PUBLIC WORKS & PROPERTY COMMITTEE MEETING MINUTES: August 5, 2021**

Digital audio files are archived with these written minutes additionally serving as the official record.

1. CALL TO ORDER AND ROLL CALL. Committee members present: Petts, Schoenwetter and Weihert. Absent: none. Others attending: Mark Herbst; Sara Cummings; Mayor Quimby; Parks Coordinator Gabe Haberkorn; Utility Superintendent Sorenson; Assistant Public Works Director Hauptli and Clerk/Treasurer Hansen.
2. APPROVAL OF MEETING MINUTES – June 3, 2021 Meeting Minutes. MOTION: [Schoenwetter/Weihert] to approve the minutes. VOICE VOTE: Motion carried.
3. CITIZEN INPUT / PUBLIC COMMENT. None.
4. PROJECT OVERSIGHT & UPDATES
  - a. Assessor's 2020-2021 Property Revaluation. Hansen shared Assessor Sunstrom's report. Data entry is nearly completed, He will begin the process of model building and reviewing probably at the end of this week. The reviewing does involve looking at and confirming data, sketches, conditions, grades, etc. The open book is scheduled for September 28th from 10:00am until 5:00pm. The Board of Review is scheduled for October 20th from 5-8pm. The open book would be handled by phone and zoom from our office.
  - b. Project Treyburn Residential Development. Hansen reported no offers on Lot #2 and said the closing for Lot #3 is scheduled for November 1<sup>st</sup>.
  - c. 203 East Madison Street. The Mayor indicated the project was nearly completed.
  - d. Adams Street Reconstruction. The Mayor indicated the project was nearly completed with final walk throughs scheduled.
  - e. Remnant Land Project. Hansen referenced a June email thread referencing four parcels, of which two expressed (Thomas and Reynolds) interest. By consensus the Committee directed staff to follow-up with property owners Archie, Thomas and Reynolds. No further action taken.
5. NEW BUSINESS
  - a. Ordinance #2021-06 Amending Chapter 340 Article IV UTILITIES Relating To Wireless Communications Facilities in the Right-of-Way (referred by City Council). DISCUSSION: Sorenson said the ordinance is not for the Utility for the City. By consensus the body directed the chapter's administration to be changed from Waterloo Utility to Clerk/Treasurer's office. MOTION: [Schoenwetter/Weihert] to recommend Council approval as amended by the consensus action. VOICE VOTE: Motion carried.
  - b. Brush Placed Behind Curb By 6:00 AM, Draft. DISCUSSION: The body reviewed the Mayor's text submittal. MOTION: [Schoenwetter/Weihert] to recommend Council approval of the policy document. VOICE VOTE: Motion carried.
  - c. DPW 2022 Budget Submittal. MOTION: [Schoenwetter/Weihert] To table the item until the next meeting. VOICE VOTE: Motion carried.
    - i. Capital Budget
    - ii. Operational Budget
  - d. Parks Pavilion Sump Pump Crack Repair Proposal. DISCUSSION: Haberkorn spoke in favor of the bid saying a professional contractor would help remedy a long standing foundation leakage problem. MOTION: [Schoenwetter/Weihert] To recommend Council approval applying contingency dollars. VOICE VOTE: Motion carried.
6. FUTURE AGENDA ITEMS AND ANNOUNCEMENTS
  - a. Committee Calendar. Noted.
7. ADJOURNMENT. MOTION: [Schoenwetter/Petts] to adjourn. Motion carried. Time: 6:45 pm.



Attest: Mo Hansen, Clerk/Treasurer



136 North Monroe Street, Waterloo, Wisconsin 53594-1198  
Phone (920) 478-3025  
Fax (920) 478-2021

ORDINANCE #2021-06

**Creating Chapter 354 Amending Chapter 340 Article IV UTILITIES Relating To Wireless  
Communications Facilities in the Right-of-Way**

The City Council of the City of Waterloo, Jefferson County, Wisconsin do ordain as follows:

**SECTION A:** ~~Chapter 354 is hereby created -Chapter 340 Article IV Communications Utility is hereby amended as shown below incorporating the text presented here enumerating it after the exiting sections 340-27 to 340-29.~~

**Article IV  
Communications Utility**

**Section 1: Definitions**

For the purposes of this Chapter, the terms below shall have the following meanings:

**“Administrator”** means the City of Waterloo Clerk/Treasurer’s office or his or her designee.

**“Application”** means a formal request, including all required and requested documentation and information, submitted by an applicant to the City of Waterloo for a wireless permit.

**“Applicant”** means a person or entity filing an application for a wireless permit under this Chapter.

**“Base Station,”** consistent with 47 C.F.R. § 1.6100(b)(1), means a structure or wireless equipment at a fixed location that enables FCC-licensed or authorized wireless communications between user equipment and a communications network. This definition does not include towers, or any equipment associated with a tower.

**“City,”** means the City of Waterloo, Wisconsin.

**“Eligible Facilities Request,”** consistent with 47 C.F.R. § 1.6100(b)(3), means any request for modification of an existing tower or base station that does not substantially change the physical dimensions of such tower or base station, involving: (i) collocation of new transmission equipment; (ii) removal of transmission equipment; or (iii) replacement of transmission equipment.

**“FCC”** means the Federal Communications Commission.

**“Governmental Pole,”** consistent with Wis. Stat. § 66.0414(1)(n), means a utility pole that is owned or operated by the City of Waterloo in the right-of-way.

**“Historic District,”** consistent with Wis. Stat. § 66.0414(3)(c)5, means an area designated as historic by the City of Waterloo, listed on the national register of historic places in Wisconsin, or listed on the state register of historic places.

**“Right-of-Way”** means the surface of, and the space above and below the entire width of an improved or unimproved public roadway, highway, street, bicycle lane, landscape terrace, shoulder, side slope, public sidewalk, or public utility easement over which the City of Waterloo exercises any rights of management and control or in which the City of Waterloo has an interest.

**“Small Wireless Facility,”** consistent with 47 C.F.R. § 1.6002(l), means a facility that meets each of the following conditions:

- (1) The structure on which antenna facilities are mounted, measured from ground level:
  - i. is 50 feet or less in height, or
  - ii. is no more than 10 percent taller than other adjacent structures, or
  - iii. is not extended to a height of more than 50 feet or by more than 10 percent above its preexisting height, whichever is greater, as a result of the collocation of new antenna facilities;
- (2) Each antenna (excluding associated antenna equipment) is no more than three cubic feet in volume;
- (3) All other wireless equipment associated with the structure, including the wireless equipment associated with the antenna and any pre-existing associated equipment on the structure, is cumulatively no more than 28 cubic feet in volume;
- (4) The facility does not require antenna structure registration under 47 C.F.R. part 17;
- (5) The facility is not located on Tribal land as defined in 36 C.F.R. § 800.16(x); and
- (6) The facility does not result in human exposure to radiofrequency radiation in excess of the applicable safety standards specified by federal law.

**“Support Structure”** means any structure in the right-of-way (other than an electric transmission structure) capable of supporting wireless equipment, including a utility pole, a wireless support structure as defined in Wis. Stat. § 66.0414(1)(zp), or a base station.

**“Tower,”** consistent with 47 C.F.R. § 1.6100(b)(9), means any structure built for the sole or primary purpose of supporting any Federal Communication Commission (FCC) licensed or authorized antennas and their associated facilities, including structures that are constructed for wireless communications services including, but not limited to, private, broadcast, and public safety services, as well as unlicensed wireless services and fixed wireless services such as microwave backhaul, and the associated site. This definition does not include utility poles.

**“Transmission Equipment,”** consistent with 47 C.F.R. § 1.6100(b)(9), means equipment that facilitates transmission for any FCC-licensed or authorized wireless communication service, including, but not limited to, radio transceivers, antennas, coaxial or fiber-optic cable, and regular and backup power supply. The term includes equipment associated with wireless communications services including, but not limited to, private, broadcast, and public safety services, as well as unlicensed wireless services and fixed wireless services such as microwave backhaul.

**“Underground District,”** consistent with Wis. Stat. § 66.0414(3)(c)5, means an area designated by the City of Waterloo in which all pipes, pipelines, ducts, wires, lines, conduits, or other equipment, which are used for the transmission, distribution, or delivery of electrical power, heat, water, gas, sewer, or

telecommunications equipment, are to be located underground.

**“Utility Pole,”** means a pole that is used in whole or in part by a communications service provider; used for electric distribution, lighting, traffic control, signage, or a similar function; or used for the collocation of small wireless facilities. “Utility pole” does not include a wireless support structure or an electric transmission structure.

**“Utility Pole for Designated Services”** means a utility pole owned or operated in a right-of-way by the City of Waterloo that is designed to, or used to, carry electric distribution lines, or cables or wires for telecommunications, cable, or electric service.

**“Wireless Equipment”** means an antenna facility at a fixed location that enables wireless services between user equipment and a communications network, and includes all of the following: (a) equipment associated with wireless services; (b) radio transceivers, antennas, or coaxial, metallic, or fiber-optic cable located on, in, under, or otherwise adjacent to a support structure; (c) regular and backup power supplies; (d) equipment that is comparable to equipment specified in this definition regardless of technical configuration. “Wireless Equipment” does not include (a) the structure or improvements on, under, or within which the equipment is collocated; (b) wireline backhaul facilities; or (c) coaxial, metallic, or fiber-optic cable that is between utility poles or wireless support structures or that is not adjacent to a particular antenna. The definition of “Wireless Equipment” in this ordinance is consistent with the definition of “wireless facility” in Wis. Stat. § 66.0414(1)(z).

**“Wireless Facility” or “Facility”** means an installation at a fixed location in the right-of-way consisting of wireless equipment and the support structure, if any, associated with the wireless equipment.

**“Wireless Infrastructure Provider”** means any person or entity, other than a wireless services provider, that builds or installs wireless communications transmission equipment, antenna equipment, or wireless support structures.

**“Wireless Permit” or “Permit”** means a permit issued pursuant to this Chapter and authorizing the placement or modification of a wireless facility of a design specified in the permit at a particular location within the right-of-way, and the modification of any existing support structure to which the wireless facility is proposed to be attached.

**“Wireless Provider”** means a wireless infrastructure provider or a wireless services provider.

**“Wireless Regulations”** means those regulations adopted pursuant to Section 5(b)(1) to implement the provisions of this Chapter.

**“Wireless Services”** means any service using licensed or unlicensed wireless spectrum, including the use of a Wi-Fi network, whether at a fixed location or by means of a mobile device.

**“Wireless Service Provider”** means a person or entity that provides wireless services.

Definitions in this Section may contain quotations or citations to 47 C.F.R. §§ 1.6100 and 1.6002 and Wis. Stat. § 66.0414. In the event that any referenced section is amended, creating a conflict between the definition as set forth in this Chapter and the amended language of the referenced section, the definition in the referenced section, as amended, shall control. City of Waterloo

## **Section 2: Purpose**

In the exercise of its police powers, the City of Waterloo has priority over all other uses of the right-of-way. The purpose of this Chapter is to provide the City of Waterloo with a process for managing, and uniform standards for acting upon, requests for the placement of wireless facilities within the right-of-way consistent with the City of Waterloo obligation to promote the public health, safety, and welfare; to manage the right-of-way; and to ensure that the public's use is not obstructed or incommoded by the use of the right-of-way for the placement of wireless facilities. The City of Waterloo recognizes the importance of wireless facilities to provide high-quality communications and internet access services to residents and businesses within the City of Waterloo. The City of Waterloo also recognizes its obligation to comply with applicable Federal and State laws regarding the placement of wireless facilities in the right-of-way including, without limitation, the Telecommunications Act of 1996 (47 U.S.C. § 151 et seq.), Section 6409(a) of the Middle Class Tax Relief and Job Creation Act of 2012, Wis. Stat. § 182.017, Wis. Stat. § 196.58, and Wis. Stat. § 66.0414, as amended, and this Chapter shall be interpreted consistent with those provisions.

## **Section 3: Scope**

(a) **Applicability.** Unless exempted by Section 3(b), below, every person who wishes to place a wireless facility in the right-of-way or modify an existing wireless facility in the right-of-way must obtain a wireless permit under this Chapter.

(b) **Exempt Facilities.** The provisions of this Chapter (other than Sections 10-13) shall not be applied to applications for the following:

- (1) Installation, maintenance, operation, or replacement of a small wireless facility strung on cables between two existing utility poles in compliance with the National Electrical Safety Code, provided that the small wireless facility does not exceed 24 inches in length, 15 inches in width, and 12 inches in height and has no exterior antenna longer than 11 inches.
- (2) Installation of a mobile cell facility (commonly referred to as "cell on wheels" or "cell on truck") for a temporary period in connection with an emergency or event, but no longer than required for the emergency or event, provided that installation does not involve excavation, movement, or removal of existing facilities.
- (3) Placement or modification of a wireless facility by City of Waterloo staff or any person performing work under contract with the City of Waterloo.
- (4) The replacement of an existing small wireless facility with a small wireless facility that is substantially similar to, or the same size or smaller than, the existing small wireless facility, provided that there is no change to the support structure on which the small wireless facility is placed.
- (5) Routine maintenance of a wireless facility.

(c) **Placement on City of Waterloo-Owned or –Controlled Support Structures.** Any applicant who wishes to place wireless equipment on a support structure owned or controlled by the City of Waterloo, including governmental poles and utility poles for designated services, must obtain a wireless permit under this Chapter and enter into an attachment agreement with the Waterloo Water & Light Commission. The agreement shall include provisions regarding make-ready work and specify the compensation to be paid to the City of Waterloo for use of the support structure in accordance with the standards set out in Wis. Stat. § 66.0414(4), as amended. Unless prohibited by state or federal law, the person or entity seeking the agreement shall reimburse the City of Waterloo for all costs the City of

Waterloo incurs in connection with its review of and action upon the request for an agreement.

#### **Section 4: Nondiscrimination**

In establishing the rights, obligations, and conditions set forth in this Chapter, it is the intent of the City of Waterloo to treat each applicant and right-of-way user in a competitively neutral and nondiscriminatory manner, to the extent required by law, while taking into account the unique technologies, situation, and legal status of each applicant or request for use of the right-of-way.

#### **Section 5: Administration**

(a) **Administrator.** The administrator is responsible for administering this Chapter.

(b) **Powers.** As part of the administration of this Chapter, the administrator may:

- (1) Adopt wireless regulations governing the placement and modification of wireless facilities in addition to but consistent with the requirements of this Chapter, including regulations governing collocation, the resolution of conflicting applications for placement of wireless facilities, and aesthetic standards. The regulations must be published in advance of their enforcement.
- (2) Interpret the provisions of the Chapter and the wireless regulations.
- (3) Develop forms and procedures for submission of applications for wireless permits consistent with this Chapter.
- (4) Collect any fee required by this Chapter.
- (5) Establish deadlines for submission of information related to an application and extend or shorten deadlines where appropriate and consistent with federal laws and regulations.
- (6) Issue notices of incompleteness or requests for information in connection with any wireless permit application.
- (7) Select and retain an independent consultant or attorney with expertise in telecommunications to review any issue that involves specialized or expert knowledge in connection with any permit application.
- (8) Coordinate and consult with other City of Waterloo staff, committees, and governing bodies to ensure timely action on all other required permits under Section 6(b)(11) of this Chapter.
- (9) Negotiate attachment agreements for the placement of wireless equipment on governmental poles or utility poles for designated.
- (10) Subject to appeal as provided in Section 8(d) of this Chapter, determine whether to grant, grant subject to conditions, or deny an application.
- (11) Take such other steps as may be required to timely act upon wireless permit applications, including issuing written decisions and entering into agreements to mutually extend the time for action on an application.

#### **Section 6: Application**



(a) **Format.** Unless the wireless regulations provide otherwise, the applicant must submit both a paper copy and an electronic copy (in a searchable format) of any application, as well as any amendments or supplements to the application or responses to requests for information regarding an application, to the Administrator. An application is not complete until both the paper and electronic copies are received by the Administrator.

(b) **Content.** In order to be considered complete, an application must contain:

(1) All information required pursuant to the wireless regulations.

(2) A completed application cover sheet signed by an authorized representative of the applicant.

(3) The name of the applicant (including any corporate or trade name), and the name, address, email address, and telephone number of a local representative and of all duly authorized representatives and consultants acting on behalf of the applicant with respect to the filing of the application. If the applicant is a wireless infrastructure provider, the name and contact information for the wireless service provider(s) that will be using the wireless facility must also be provided.

(4) A statement of which state or federal deadline(s) apply to the application.

(5) A separate and complete description of each proposed wireless facility and the work that will be required to install or modify it, including but not limited to detail regarding proposed excavations, if any; detailed site plans showing the location of the facility and technical specifications for each element of the facility, clearly describing the site and all structures and equipment at the site before and after installation or modification and identifying the owners of such preexisting structures and equipment; and describing the distance to the nearest residential dwelling unit. Before and after 360-degree photo simulations must be provided for each facility.

(6) A certification by the applicant that the wireless facility will not materially interfere with the safe operation of traffic control equipment or sight lines or clear zones for transportation of pedestrians and will fully comply with the federal Americans with Disabilities Act or similar federal or state standards regarding pedestrian access or movement.

(7) A certification by the applicant that the wireless facility will comply with relevant FCC regulations concerning radio frequency emissions from radio transmitters and unacceptable interference with public safety spectrum, including compliance with the abatement and resolution procedures for interference with public safety spectrum established by the FCC set forth in 47 C.F.R. §§ 22.97 to 22.973 and 47 C.F.R. §§ 90.672 to 90.675.

(8) A statement that the wireless facility will comply with the state electrical wiring code, as defined in Wis. Stat. § 101.80(4), as amended; the state plumbing code specified in Wis. Stat. § 145.13, as amended; the fire prevention code under Wis. Admin. Code § SPS 314, as amended; the Wisconsin commercial building code under Wis. Admin. Code §§ SPS 361 to 366, as amended; the Wisconsin uniform dwelling code under Wis. Admin. Code §§ SPS 320 to 325, as amended; and all local amendments to those codes enacted solely to address imminent threats of destruction of property or injury to persons.

(9) A structural report performed by a professional engineer registered in the State of Wisconsin evidencing that the support structure on which the wireless equipment will be mounted will

structurally support the equipment, or that the structure may and will be modified to meet structural requirements, in accordance with applicable codes, including the National Electric Safety Code and the National Electric Code.

(10) If the support structure on which the wireless equipment will be mounted is owned by a third party, a certification that the applicant has permission from the owner to mount its equipment on the structure. This is not required if the support structure is a governmental pole or a utility pole for designated services, as permission will be evidenced by the executed attachment agreement referenced in Section 3(c).

(11) To the extent that filing of the wireless permit application establishes a deadline for action on any other permit that may be required in connection with the wireless facility, the application must include complete copies of applications for every required permit (including without limitation electrical permits, building permits, traffic control permits, and excavation permits), with all engineering completed.

(12) Payment of all required fees.

(c) **Waivers.** Requests for waivers from any requirement of this Section 6 shall be made in writing to the Administrator. The Administrator may grant a request for waiver if it is demonstrated that, notwithstanding the issuance of the waiver, the City of Waterloo will be provided with all information necessary to understand the nature of the construction or other activity to be conducted pursuant to the wireless permit sought.

(d) **Eligible Facilities Requests.** If the applicant asserts in writing that its application is an eligible facilities request, the City of Waterloo will only require the applicant to provide that information set forth in subsection (b) to the extent reasonably related to determining whether the request meets the definition of “eligible facilities request” under 47 C.F.R. § 1.6100(b)(3). The applicant will be required to submit evidence that the application relates to an existing tower or base station that has been approved by the City of Waterloo. Before and after 360-degree photo simulations must be provided with detailed specifications demonstration that the modification does not substantially change the physical dimensions of the existing approved tower or base station.

(e) **Fees.** Applicant must pay an application fee in an amount set by the Common Council to allow recovery of the City of Waterloo’s direct costs of processing the application, subject to the limits contained in state and federal law, including Wis. Stat. § 66.0414(3)(d), as amended.

(f) **Public Records.** Applications are public records that may be made publicly available pursuant to state and federal public records law. Notwithstanding the foregoing, the applicant may designate portions of the application materials that it reasonably believes contain proprietary or confidential information by clearly marking each portion of such materials accordingly, and the City of Waterloo shall endeavor to treat the information as proprietary and confidential, subject to applicable state and federal public records laws and the Administrator’s determination that the applicant’s request for confidential or proprietary treatment of the application materials is reasonable. The City of Waterloo shall not be required to incur any costs to protect the application from disclosure.

## **Section 7: General Standards**

(a) **Generally.** Wireless facilities shall meet the minimum requirements set forth in this Chapter and the wireless regulations, in addition to the requirements of any other applicable law or regulation.

(b) **Regulations.** The wireless regulations and decisions on wireless permits shall, at a minimum, ensure that the requirements of this Chapter are satisfied, unless it is determined that the applicant has established that denial of an application would, within the meaning of federal law, prohibit or effectively prohibit the provision of telecommunications or personal wireless services, or otherwise violate applicable laws or regulations. If that determination is made, the requirements of this Chapter and the wireless regulations may be waived, but only to the extent required to avoid the prohibition.

(c) **Standards.**

(1) Wireless facilities shall be installed and modified in a manner that:

(A) Minimizes risks to public safety;

(B) Ensures that placement of wireless equipment on existing support structures is within the tolerance of those structures;

(C) Ensures that new support structures will not be installed when the applicant has the right to place its wireless facility on an existing structure on reasonable terms and conditions and placement in that location is technically feasible and not materially more expensive;

(D) Avoids installation or modification of a utility pole that would exceed the height limits set forth in Wis. Stat. § 66.0414(2)(e)2, as amended;

(E) Avoids placement of aboveground wireless facilities in historic districts and underground districts (except for placing equipment on or replacing pre-existing support structures, so long as the collocation or replacement reasonably conforms to the design aesthetics of the original support structure);

(F) Avoids placement of wireless facilities in residential areas when commercial or industrial areas are reasonably available;(G) Maintains the integrity and character of the neighborhoods and corridors in which the facilities are located;

(H) Ensures that the City of Waterloo bears no risk or liability as a result of the installations; and

(I) Ensures that applicant's use does not obstruct or hinder travel, drainage, maintenance, or the public health, safety, and general welfare; inconvenience the public; interfere with the primary uses of the right-of-way; or hinder the ability of the City of Waterloo or other government entities to improve, modify, relocate, abandon, or vacate the right-of-way or any portion thereof, or to cause the improvement, modification, relocation, vacation, or abandonment of facilities in the right-of-way.

(2) In no event may ground-mounted equipment interfere with pedestrian or vehicular traffic and at all times must comply with the requirements of the Americans with Disabilities Act of 1990.

(d) **Standard Permit Conditions.** All wireless permits, whether granted under this Chapter or deemed granted by operation of state or federal law, are issued subject to the following minimum conditions:

(1) **Compliance.** The permit holder shall at all times maintain compliance with all applicable Federal, State, and local laws, regulations, and other rules.

(2) **Construction Deadline.** The permit holder shall commence the activity authorized by the permit no later than 365 days after the permit is granted and shall pursue work on the activity until completion.

(3) **Contact Information.** The permit holder shall at all times maintain with the City of Waterloo accurate contact information for the permit holder and all wireless service providers making use of the facility, which shall include a phone number, mailing address, and email address for at

least one natural person.

(4) **Emergencies.** The City of Waterloo shall have the right to support, repair, disable, or remove any elements of the facilities in emergencies or when the facility threatens imminent harm to persons or property.

(5) **Indemnification.** The permit holder, by accepting a permit under this Chapter, agrees to indemnify and hold harmless the City of Waterloo, its elected and appointed officials, officers, employees, agents, representatives, and volunteers (collectively, the “Indemnified Parties”) from and against any and all liability and loss from personal injury or property damage resulting from or arising out of, in whole or in part, the use or occupancy of rights-of-way by the permit holder or anyone acting under its direction or control or on its behalf arising out of the rights and privileges granted under this Chapter, even if liability is also sought to be imposed on one or more of the Indemnified Parties. The obligation to indemnify and hold harmless the Indemnified Parties shall be applicable even if the liability results in part from an act or failure to act on the part of one or more of the Indemnified Parties. However, the obligation does not apply if the liability results from the sole negligence or willful misconduct of an Indemnified Party.

(6) **Adverse Impacts on Adjacent Properties.** The permit holder shall undertake all reasonable efforts to avoid undue adverse impacts to adjacent properties and/or uses that may arise from the construction, operation, maintenance, modification, or removal of the facility.

(7) **General Maintenance.** The wireless facility and any associated structures shall be maintained in a neat and clean manner and in accordance with all approved plans and conditions of approval.

(8) **Graffiti Removal.** All graffiti on facilities shall be removed at the sole expense of the permit holder within 48 hours after notification from the City of Waterloo.

(9) **Relocation.** At the request of the City of Waterloo pursuant to Section 10 of this Chapter, the permit holder shall promptly and at its own expense permanently remove and relocate its wireless facility in the right-of-way.

(10) **Abandonment.** The permit holder shall promptly notify the City of Waterloo whenever a facility has not been in use for a continuous period of 60 days or longer and must comply with Section 11 of this Chapter.

(11) **Restoration.** A permit holder who removes or relocates a facility from the right-of-way or otherwise causes any damage to the right-of-way in connection with its activities under this Chapter must restore the right-of-way in accordance with Section 12 of this Chapter.

(12) **Record Retention.** The permit holder shall retain full and complete copies of all permits and other regulatory approvals issued in connection with the facility, which includes without limitation all conditions of approval, approved plans, resolutions, and other documentation associated with the permit or regulatory approval. In the event the City of Waterloo cannot locate any such full and complete permits or other regulatory approvals in its official records, and the permit holder fails to retain full and complete records in the permit holder’s files, any ambiguities or uncertainties that would be resolved through an examination of the missing documents will be conclusively resolved against the permit holder.

(13) **Radio Frequency Emissions.** Every wireless facility shall at all times comply with applicable

FCC regulations governing radio frequency emissions, and failure to comply with such regulations shall be treated as a material violation of the terms of the permit.

(14) **Certificate of Insurance.** A certificate of insurance sufficient to demonstrate to the satisfaction of the Administrator that the applicant has the capability to cover any liability that might arise out of the presence of the facility in the right-of-way.

## **Section 8: Application Processing and Appeal**

(a) **Rejection for Incompleteness.** Notices of incompleteness shall be provided in conformity with state, local, and federal law, including 47 C.F.R. § 1.6003(d) and Wis. Stat. § 66.0414(3)(c), as amended.

(b) **Processing Timeline.** Wireless permit applications (including applications for other permits under Section 6(b)(11) necessary to place or modify the facility) and appeals will be processed in conformity with the deadlines set forth in state, local, and federal law, as amended, unless the applicant and the City of Waterloo agree to an extension.

(c) **Written Decision.** In the event that an application is denied (or approved with conditions beyond the standard permit conditions set forth in Section 7(d)), the Administrator shall issue a written decision with the reasons therefor, supported by substantial evidence contained in a written record. If the permit is for a small wireless facility, the applicant may cure the deficiencies identified in the written decision denying the permit and re-submit the application no later than 30 days after receipt without being required to pay an additional application fee.

(d) **Appeal to City Council.** Any person adversely affected by the decision of the Administrator may appeal that decision to the Waterloo Utility Commission or Waterloo Common Council, which may decide the issues *de novo*, and whose written decision will be the final decision of the City. An appeal by a wireless infrastructure provider must be taken jointly with the wireless service provider that intends to use the wireless facility. If an applicant contends that denial of the application would prohibit or effectively prohibit the provision of service in violation of federal law, or otherwise violate applicable law, the documentation accompanying the appeal must include that contention and provide all evidence on which the applicant relies in support of that claim.

(e) **Deadline to Appeal.**

(1) Appeals that involve eligible facilities requests must be filed within three business days of the written decision of the Administrator.

(2) All other appeals not governed by Section 8(e)(1), above, must be filed within seven business days of the written decision of the Administrator, unless the Administrator extends the time therefor. An extension may not be granted where extension would result in approval of the application by operation of law.

(d) **Decision Deadline.** All appeals shall be conducted so that a timely written decision may be issued in accordance with the applicable deadline.

## **Section 9: Revocation**

(a) **Revocation for Breach.** A wireless permit may be revoked for failure to comply with the conditions of the permit or applicable federal, state, or local laws, rules, or regulations. Upon revocation, the facilities for which the permit has been revoked must be removed within 30 days of receipt of written

notice from the City of Waterloo. All costs incurred by the City of Waterloo in connection with the revocation, removal, and right-of-way restoration shall be paid by the permit holder.

(b) **Failure to Obtain Permit.** Unless exempted from permitting by Section 3(b) of this Chapter, a wireless facility installed without a wireless permit must be removed within 30 days of receipt of written notice from the City of Waterloo. All costs incurred by the City of Waterloo in connection with the notice, removal, and right-of-way restoration shall be paid by the entities who own or control any part of the wireless facility.

#### **Section 10: Relocation**

Except as otherwise prohibited by state or federal law, a permit holder must promptly and at its own expense, with due regard for seasonal working conditions and as directed by the City of Waterloo, permanently remove and relocate any of its wireless facilities in the right-of-way whenever such relocation is necessary to prevent the wireless facility from interfering with a present or future City of Waterloo use of the right-of-way; a public improvement undertaken by the City of Waterloo; an economic development project in which the City of Waterloo has an interest or investment; when the public health, safety, or welfare require it; or when necessary to prevent interference with the safety and convenience of ordinary travel over the right-of-way. Notwithstanding the foregoing, a permit holder shall not be required to remove or relocate its facilities from any right-of-way that has been vacated in favor of a non-governmental entity unless and until that entity pays the reasonable costs of removal or relocation to the permit holder.

#### **Section 11: Abandonment**

(a) **Cessation of Use.** In the event that a permitted facility within the right-of-way is not in use for a continuous period of 60 days or longer, the permit holder must promptly notify the City of Waterloo and do one of the following:

- (1) Provide information satisfactory to the Administrator that the permit holder's obligations for its facilities under this Chapter have been lawfully assumed by another permit holder.
- (2) Submit to the Administrator a proposal and instruments for dedication of the facilities to the City. If a permit holder proceeds under this Section 11(a)(2), the City of Waterloo may, at its option:
  - (A) Accept the dedication for all or a portion of the facilities;
  - (B) Require the permit holder, at its own expense, to remove the facilities and perform the required restoration under Section 12; or
  - (C) Require the permit holder to post a bond or provide payment sufficient to reimburse the City of Waterloo for reasonably anticipated costs to be incurred in removing the facilities and undertaking restoration under Section 12.
- (3) Remove its facilities from the right-of-way within one year and perform the required restoration under Section 12, unless the Administrator waives this requirement or provides a later deadline.

(b) **Abandoned Facilities.** Facilities of a permit holder who fails to comply with Section 11(a) and which, for one year, remain unused shall be deemed to be abandoned. Abandoned facilities are deemed to be a nuisance. In addition to any remedies or rights it has at law or in equity, the City of Waterloo may, at its option:



- (1) abate the nuisance and recover the cost from the permit holder or the permit holder's successor in interest;
- (2) take possession of the facilities; and/or
- (3) require removal of the facilities by the permit holder or the permit holder's successor in interest.

### **Section 12: Restoration**

In the event that a permit holder removes or is required to remove a wireless facility from the right-of-way under this Chapter (or relocate it pursuant to Section 10), or otherwise causes any damage to the right-of-way in connection with its activities under this Chapter, the permit holder must restore the right-of-way to its prior condition in accordance with City of Waterloo specifications. However, a support structure owned by another entity authorized to maintain that support structure in the right-of-way need not be removed but must instead be restored to its prior condition. If the permit holder fails to make the restorations required by this Section 12, the City of Waterloo at its option may do such work after providing 15 days' written notice to the permit holder. In that event, the permit holder shall pay to the City of Waterloo, within 30 days of billing therefor, the cost of restoring the right-of-way.

### **Section 13: Severability**

If any section, subsection, clause, phrase, or portion of this Chapter is for any reason held to be illegal or otherwise invalid by any court or administrative agency of competent jurisdiction, such illegal or invalid portion shall be severable and shall not affect or impair any remaining portion of this Chapter, which shall remain in full force and effect.

### **Section 14: Use Fee**

The permit holder must pay to the City an annual fee to use the right of way (Use Fee). The Use Fee shall equal the maximum fee allowable under Wis. Stat. § 66.0414(2)(c). The permit holder shall be invoiced for the first Use Fee on the date the permit is issued, prorated based on the proportion of the calendar year then remaining. Subsequent invoicing shall be prospective and occur each January. If the permit holder fails to pay the Use Fee within 30 days after it is due, the permit holder shall pay interest of two percent per month on the amount past due.

**SECTION B:** This ordinance shall take effect and be in force from and after its passage and posting as provided by law.

**BY ORDER OF THE CITY COUNCIL OF THE CITY OF  
WATERLOO**

\_\_\_\_\_  
Mayor

Attest:

\_\_\_\_\_

Date Adopted: \_\_\_\_\_

Date Published: \_\_\_\_\_

FISCAL EFFECT: Undetermined nNew revenue to Waterloo Utilities and General Fund.

## Mo Hansen

---

**To:** Leisses, Mitchell  
**Cc:** Chad Yerges; Jeanne Ritter  
**Subject:** RE: Routing PASER info for 9/2 Public Works & Property meeting material

Mitch, confirming receipt with anticipated meeting handout. Thank you.

Mo Hansen | Clerk/Treasurer | [City of Waterloo](#) | 920.478.3025

---

**From:** Leisses, Mitchell <mleisses@geo-logic.com>  
**Sent:** Monday, August 30, 2021 9:37 AM  
**To:** Mo Hansen <mhansen@waterloowi.us>  
**Cc:** Chad Yerges <dpw@waterloowi.us>; Jeanne Ritter <jritter@waterloowi.us>  
**Subject:** Re: Routing PASER info for 9/2 Public Works & Property meeting material

Good Morning Mo,

I apologize for the delay. I've attached our Report and list of Ratings for the roadways. At this time, I do not have an updated map with the color coded roadways, by their score. When we requested the "shape" file for our GIS mapping, the DOT sent us an old version. We are trying to get the data updated in time for the meeting, where I could just hand out a copy at that time.

Sincerely,

**Mitchell Leisses**  
Office/Project Manager

**Kunkel Engineering Group**  
**a Geo-Logic Company**  
1115 South Main Street  
West Bend, WI 53095  
Office: (920)356-9447 | Direct: (920)210-6330  
[mleisses@kunkelengineering.com](mailto:mleisses@kunkelengineering.com) or [mleisses@geo-logic.com](mailto:mleisses@geo-logic.com)

[www.kunkelengineering.com](http://www.kunkelengineering.com) | [www.geo-logic.com](http://www.geo-logic.com)

The contents of this e-mail message, including any attachments, are for the sole use of the intended recipient named above. This email may contain confidential and/or legally privileged information. If you are not the intended recipient of this message, be advised that any dissemination, distribution, or use of the contents of this message is strictly prohibited. If you receive this message in error, please notify the sender by return e-mail and permanently delete all copies of the original e-mail and any attached documentation. Thank you.

---

**From:** Mo Hansen <[mhansen@waterloowi.us](mailto:mhansen@waterloowi.us)>  
**Sent:** Friday, August 27, 2021 4:40 AM  
**To:** Leisses, Mitchell <[mleisses@geo-logic.com](mailto:mleisses@geo-logic.com)>  
**Cc:** Chad Yerges <[dpw@waterloowi.us](mailto:dpw@waterloowi.us)>; Jeanne Ritter <[jritter@waterloowi.us](mailto:jritter@waterloowi.us)>  
**Subject:** RE: Routing PASER info for 9/2 Public Works & Property meeting material

Mitch,

We are assembling the 9/2 meeting materials. Please provide an update on WISLR/PASER information availability? Thanks.

Mo Hansen | Clerk/Treasurer | [City of Waterloo](#) | 920.478.3025

---

**From:** Mo Hansen  
**Sent:** Wednesday, August 25, 2021 9:16 AM  
**To:** Leisses, Mitchell <[mleisses@geo-logic.com](mailto:mleisses@geo-logic.com)>



**Cc:** Chad Yerges <[dpw@waterloowi.us](mailto:dpw@waterloowi.us)>; Jeanne Ritter <[jritter@waterloowi.us](mailto:jritter@waterloowi.us)>

**Subject:** Routing PASER info for 9/2 Public Works & Property meeting material

Mitch,

Please route PASER materials for the 9/2 Committee consideration. We will post to our website, and incorporate into meeting materials information. I know PDF viewability has been a concern in prior years. Thank you.

Mo Hansen | Clerk/Treasurer | [City of Waterloo](#) | 920.478.3025

**CAUTION:** This email originated from outside the organization. Do not click links or open attachments unless you recognize the sender and know the content is safe.



107 PARALLEL STREET  
BEAVER DAM, WI 53916

1115 S. MAIN STREET  
WEST BEND, WI 53095

920-356-9447  
FAX 920-356-9454  
KUNKELENGINEERING.COM

August 22, 2021

Mr. Mo Hansen  
Clerk/Treasurer  
City of Waterloo  
136 North Monroe Street  
Waterloo, Wisconsin 53594

**Re: City of Waterloo | 2021 WISLR Ratings and Report**

Dear Mr. Hansen,

Kunkel Engineering Group inspected the public roadways, 18.15 miles in length, under the City of Waterloo's jurisdiction for statutory biennial reporting of the pavement condition to the Wisconsin Department of Transportation. The results of that inspection, in the form of an Excel spreadsheet, are attached to this transmittal for your review and have been submitted to the State through the WISLR site.

A weighted overall pavement rating was determined using the WISLR inventory prior to the inspection and compared to a weighted rating computed after the field inspection. The weighted rating is the product of the length of roadway multiplied by the rating (a scale of 1 to 10, worst to best) for that section of roadway, summed and divided by the total length of the City's roadways. The weighted rating prior to the inspection was 5.561, as rated in 2019. The 2021 weighted rating, after the inspection, is 5.053.

As you can see from the ratings, there is a decline in ratings over the last two years. With the exception of 2017 to 2019, this is in accordance with the previous trends over the past eight to ten years. This indicates the City should continue to allocate additional dollars to the maintenance fund whenever possible.

Mo, should you or representatives of the City Council have any questions or comments, please do not hesitate to contact me.

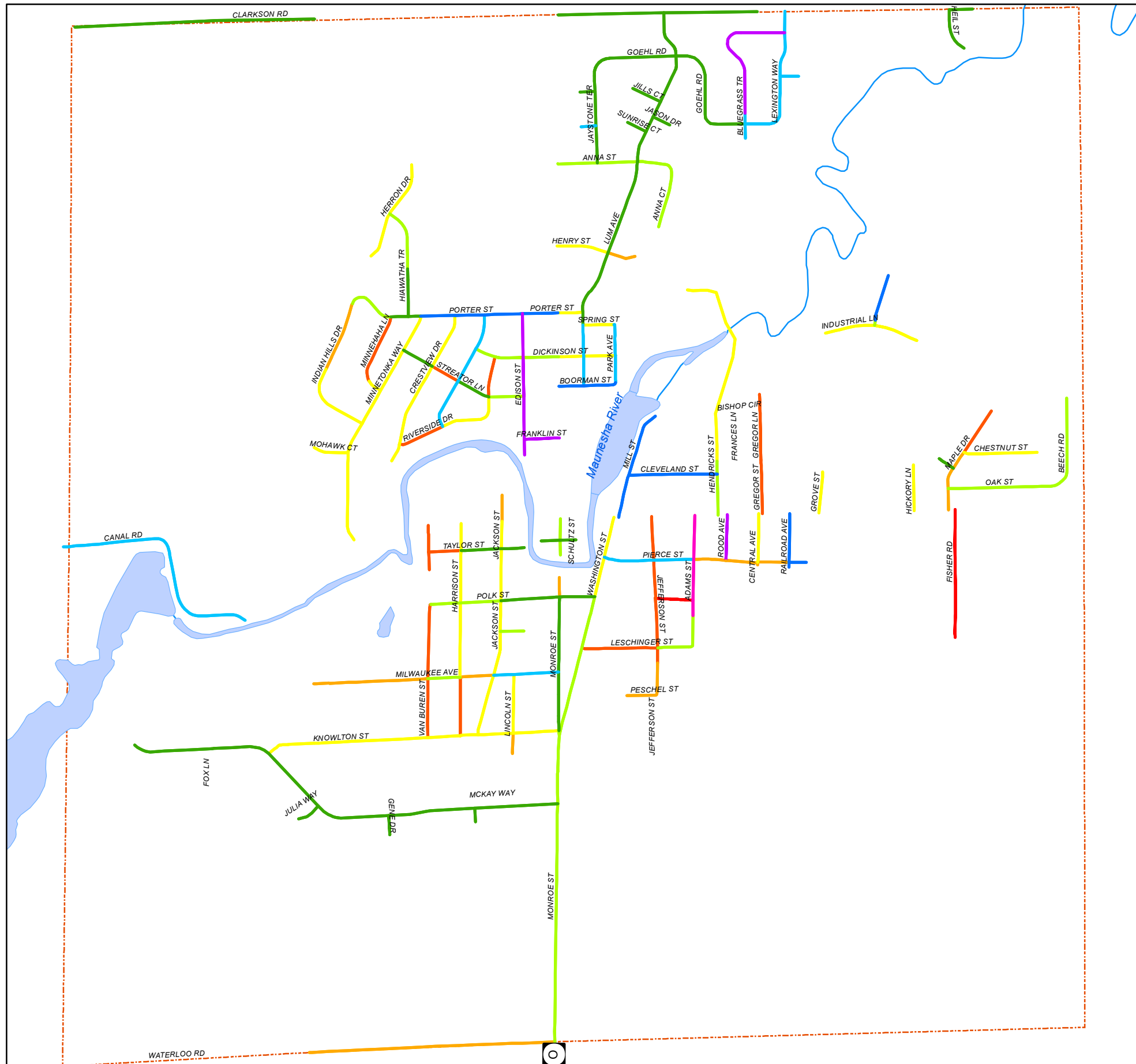
Sincerely,


KUNKEL ENGINEERING GROUP

Mitchell Leisses  
Office/Project Manager

Enclosures

cc: Chad Yerges, DPW Director





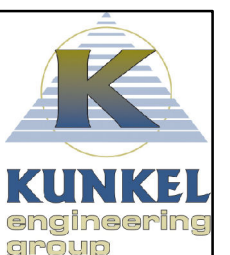
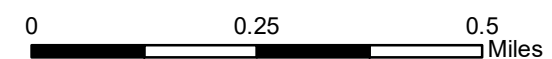
2021

Roadway Ratings

Tuesday, August 31, 2021

## PASER Ratings

- 10 Excellent
- 9 Excellent
- 8 Very Good
- 7 Good
- 6 Good
- 5 Fair
- 4 Fair
- 3 Poor
- 2 Very Poor
- 1 Failed



**City of Waterloo**  
**2021 WISLR Pavement Ratings**

Rating	Type	Year	Width	On Route	At Route	At Offset	Toward Route	Section Length	Local ID	Weighted Rating
1	35	1980	36	E Polk St	Adams St	0	Jefferson St	370		0.0039
1	35	1959	14	Fisher Rd	E Madison St / STH 89	0	Termini	1320		0.0138
2	70	1969	20	Gregor Ln	E Madison St / STH 19 / STH 89	0	Tremaine St	422		0.0088
2	70	1969	20	Gregor Ln	Tremaine St	0	Termini	475		0.0099
2	70	1975	31	Harrison St	Milwaukee Ave	0	Knowlton St	581		0.0121
2	70	1963	28	Jefferson St	E Madison St / STH 19 / STH 89	0	Pierce St	475	123-02	0.0099
2	70	1963	28	Jefferson St	Pierce St	0	E Polk St	370	123-02	0.0077
2	70	1963	28	Jefferson St	E Polk St	0	Leschinger St	528	123-02	0.0110
2	65	1975	31	Jefferson St	Leschinger St	0	Peschel St / Termini	158	123-02	0.0033
2	70	2003	21	Leschinger St	S Washington St	0	Jefferson St	739	123-31	0.0154
2	70	1992	16	Lincoln St	Milwaukee Ave	0	Knowlton St	16		0.0003
2	70	1976	34	Maple Dr	Chestnut St	0	Termini	264		0.0055
2	70	1967	34	Minnehaha Ln	Minnetonka Way	158	Indian Hills Dr	740		0.0154
2	70	1964	34	Riverside Dr	Crestview Dr	0	Bradford Dr	528		0.0110
2	70	1964	34	Riverside Dr	Streator Ln	0	W Dickenson St	422		0.0088
2	70	1955	34	Streator Ln	Bradford Dr	0	Crestview Dr	317		0.0066
2	70	1959	31	Taylor St	Van Buren St	0	Harrison St	317		0.0066
2	65	1975	20	Van Buren St	W Madison St / STH 19	0	Taylor St	264		0.0055
2	65	1975	20	Van Buren St	Taylor St	0	Termini	211		0.0044
2	65	1980	28	Van Buren St	W Polk St	317	Milwaukee Ave	792	177-60	0.0165
2	65	1980	28	Van Buren St	Milwaukee Ave	0	Knowlton St	581	177-60	0.0121
3	40	1961	30	Central Ave	Pierce St	0	Termini	106		0.0033
3	65	1994	34	Henry Ct	Henry St / Lum Ave	0	Termini	264		0.0083
3	70	1968	34	Indian Hills Dr	Minnehaha Ln	508	Minnetonka Way	736		0.0230
3	70	1975	22	Jackson St	Termini	0	W Madison St / STH 19	475	122-01	0.0149
3	70	1992	16	Lincoln St	Knowlton St	0	Termini	196	n/a	0.0061
3	70	1992	16	Lincoln St	Knowlton St	196	Termini	15		0.0005
3	70	1968	34	Maple Dr	E Madison St / STH 89	0	Oak St	264		0.0083
3	70	1968	34	Maple Dr	Oak St	0	Birch St	211		0.0066
3	70	1976	34	Maple Dr	Birch St	0	Chestnut St	106		0.0033
3	70	1978	29	Milwaukee Ave	Jackson St	0	Harrison St	317	123-41	0.0099
3	70	1969	18	Milwaukee Ave	Van Buren St	0	Termini	1373		0.0430
3	70	2003	28	Monroe St S	W Polk St	0	Termini	211	n/a	0.0066
3	70	2008	31	Peschel St	Jefferson St	158	Termini	634		0.0199
3	70	1998	37	Pierce St	Adams St	0	Rood Ave	317	123-47	0.0099
3	70	1998	37	Pierce St	Rood Ave	0	Central Ave	370	123-47	0.0116
3	70	1998	37	Pierce St	Central Ave	0	Railroad Ave	317	123-47	0.0099
3	65	1976	20	Waterloo Rd	Monroe St S / CTH O	0	Sunset View Ln / Waterloo Rd	2534		0.0793
4	65	1994	36	Central Ave	E Madison St / STH 19 / STH 89	0	Pierce St	475		0.0198
4	70	2004	34	Chestnut St	Maple Dr	0	Termini	739		0.0309
4	70	1982	34	Crestview Dr	Termini	0	Riverside Dr	211		0.0088
4	70	1982	34	Crestview Dr	Riverside Dr	0	Streator Ln	845		0.0353
4	70	1996	34	Crestview Dr	Streator Ln	0	Porter St	581		0.0243
4	65	1985	31	E Dickenson St	W Dickenson St / STH 89	0	Lum Ave	264		0.0110
4	65	1985	31	E Dickenson St	Lum Ave	0	Park Ave	317		0.0132
4	70	2004	34	Grove St	E Madison St / STH 89	0	Portland Rd / STH 19	422		0.0176
4	70	2003	31	Harrison St	W Madison St / STH 19	0	Taylor St	264	167-20	0.0110
4	70	2003	31	Harrison St	Taylor St	0	W Polk St	528	167-20	0.0220
4	70	2003	31	Harrison St	W Polk St	0	Milwaukee Ave	792	167-20	0.0331
4	65	1992	30	Hendricks St	Tremaine St	0	Termini	717	001	0.0299
4	70	1989	30	Hendricks St	Tremaine St	717	Termini	1395		0.0582
4	65	1992	34	Hendricks St	Tremaine St	2112	Termini	422		0.0176
4	70	1979	40	Henry St	STH 89	0	Henry Ct / Lum Ave	475		0.0198
4	70	1992	36	Herron Ct	Termini	0	Herron Dr / Hiawatha Trl	528		0.0220
4	70	1992	36	Herron Dr	Herron Ct / Hiawatha Trl	0	Termini	581		0.0243
4	70	1968	34	Hickory Ln	E Madison St / STH 89	0	Termini	422		0.0176
4	70	1998	35	Indian Hills Dr	Minnehaha Ln	1244	Minnetonka Way	815		0.0340
4	70	1998	36	Industrial Ln	Portland Rd / STH 19	0	Commercial Ave	459		0.0192
4	70	1998	36	Industrial Ln	Commercial Ave	0	Termini	581		0.0243
4	65	1994	30	Jackson St	W Madison St / STH 19	0	Taylor St	317	122-03	0.0132
4	65	1994	30	Jackson St	Taylor St	0	W Polk St	528	122-03	0.0220
4	65	1994	27	Jackson St	W Polk St	0	Squire St	317	122-02	0.0132
4	65	1994	27	Jackson St	Squire St	0	Milwaukee Ave	422	122-02	0.0176
4	65	1994	27	Jackson St	Milwaukee Ave	0	Knowlton St	634	122-02	0.0265
4	70	1970	33	Knowlton St	McKay Way	0	Van Buren St	1584	123-28	0.0661
4	70	2000	28	Knowlton St	Van Buren St	0	Harrison St	317		0.0132
4	70	2000	28	Knowlton St	Harrison St	0	Jackson St	158		0.0066
4	70	2000	28	Knowlton St	Jackson St	0	Lincoln St	370		0.0154
4	70	2000	28	Knowlton St	Lincoln St	0	Monroe St S	475		0.0198
4	70	1992	16	Lincoln St	Milwaukee Ave	16	Knowlton St	565	123-33	0.0236
4	70	1979	34	Minnehaha Ln	Minnetonka Way	0	Indian Hills Dr	158		0.0066
4	70	1999	35	Minnetonka Way	W Madison St / STH 19	0	Mohawk Ct	898		0.0375

**City of Waterloo  
2021 WISLR Pavement Ratings**

Rating	Type	Year	Width	On Route	At Route	At Offset	Toward Route	Section Length	Local ID	Weighted Rating
4	70	1999	35	Minnetonka Way	Mohawk Ct	0	Indian Hills Dr	317		0.0132
4	70	1999	35	Minnetonka Way	Indian Hills Dr	0	Minnehaha Ln	422		0.0176
4	70	1999	35	Minnetonka Way	Minnehaha Ln	0	Streator Ln	475		0.0198
4	70	1999	35	Minnetonka Way	Streator Ln	0	Indian Hills Dr / Porter St	370		0.0154
4	70	2003	34	Mohawk Ct	Minnetonka Way	0	Termini	370		0.0154
4	65	1992	31	Porter St	STH 89	0	Lum Ave	264		0.0110
4	70	1964	34	Riverside Dr	Bradford Dr	0	Streator Ln	686		0.0286
4	70	1997	34	S Washington St	W Polk St	0	Pierce St	370		0.0154
4	70	1997	34	S Washington St	Pierce St	0	E Madison St / STH 19 / STH 89	370		0.0154
4	65	2003	31	Spring St	Park Ave	0	Lum Ave	317		0.0132
5	70	1992	36	Anna Ct	Anna St	317	Termini	633		0.0330
5	70	1992	40	Anna St	STH 89	0	Jaystone Ter	422		0.0220
5	70	1992	40	Anna St	Jaystone Ter	0	Lum Ave	422		0.0220
5	70	1992	40	Anna St	Lum Ave	0	Anna Ct / Termini	317		0.0165
5	70	1994	34	Beech Rd	Oak St	0	Termini	423		0.0221
5	70	1998	36	Commercial Ave	Industrial Ln	0	Termini	53		0.0028
5	65	1992	30	Hendricks St	E Madison St / STH 19 / STH 89	0	Cleveland St	422	001	0.0220
5	65	1992	30	Hendricks St	Cleveland St	0	Tremaine St	106	001	0.0055
5	70	1995	34	Hiawatha Trl	Indian Hills Dr	480	Herron Ct / Herron Dr	629		0.0328
5	70	2010	33	Indian Hills Dr	Minnehaha Ln	0	Minnetonka Way	508		0.0265
5	70	1962	34	Leschinger St	Jefferson St	0	Adams St	324	123-32	0.0169
5	70	1959	30	Leschinger St	Jefferson St	324	Adams St	46		0.0024
5	70	1962	34	Leschinger St	Jefferson St	370	Adams St	317		0.0165
5	70	2004	18	Milwaukee Ave	Harrison St	0	Van Buren St	370		0.0193
5	70	1995	24	Monroe St S	Waterloo Rd / CTH O	0	McKay Way	2460		0.1284
5	70	1995	24	Monroe St S	McKay Way	0	S Washington St	708		0.0369
5	70	1995	34	Monroe St S	S Washington St	0	Knowlton St	158		0.0082
5	65	1982	49	Monroe St S	Termini	0	Mead St / Taylor St	158		0.0082
5	65	1982	49	Monroe St S	Mead St / Taylor St	0	Madison St / W Madison St / STH 19 / STH 89	211		0.0110
5	65	1997	34	Oak St	Maple Dr	0	Beech Rd	1267		0.0661
5	70	1997	34	S Washington St	Monroe St S	0	Leschinger St	792		0.0413
5	70	1997	34	S Washington St	Leschinger St	0	W Polk St	475	151-01	0.0248
5	70	2004	20	Squire St	Termini	0	Jackson St	211		0.0110
5	70	2004	34	Streator Ln	Edison St	0	Riverside Dr	370		0.0193
5	70	2004	31	W Dickenson St	Bradford Dr	0	Riverside Dr	211		0.0110
5	70	2004	31	W Dickenson St	Riverside Dr	0	Edison St	264		0.0138
5	70	2004	31	W Dickenson St	Edison St	0	E Dickenson St / STH 89	370		0.0193
5	70	1997	31	W Polk St	Jackson St	0	Harrison St	422	177-52	0.0220
5	70	1997	32	W Polk St	Harrison St	0	Van Buren St	317	177-53	0.0165
6	70	2004	34	Birch St	Maple Dr	0	Termini	158		0.0099
6	65	2005	36	Clarkson Rd	STH 73 Conn / Clarkson Rd	10613	Hickory Ln / Clarkson Rd	2429	107-03	0.1521
6	70	2011	22	Clarkson Rd	STH 89 / Clarkson Rd	0	Lum Ave	1056	107-03	0.0661
6	70	2011	22	Clarkson Rd	Lum Ave	0	Clarkson Rd	950	107-03	0.0595
6	65	1981	24	Clarkson Rd	Heil St / CTH I / Clarkson Rd	0	Columbus St / Main St	211	107-03	0.0132
6	70	2006	36	Daniel Dr	McKay Way	0	Termini	138		0.0086
6	70	2006	36	Gene Dr	McKay Way	0	Termini	194		0.0121
6	70	1999	36	Goehl Rd	Jaystone Ter	106	Lum Ave	1003	167-01	0.0628
6	70	1992	36	Goehl Rd	Lum Ave	0	Bluegrass Trl / Lexington Way	1373	167-18	0.0860
6	70	1980	22	Heil St	Portland Rd / STH 19	0	Clarkson Rd / CTH I	422		0.0264
6	70	2010	36	Hiawatha Trl	Indian Hills Dr	0	Herron Ct / Herron Dr	480		0.0301
6	70	2010	33	Indian Hills Dr	Minnetonka Way / Porter St	0	Hiawatha Trl	158		0.0099
6	70	2010	33	Indian Hills Dr	Hiawatha Trl	0	Minnehaha Ln	158		0.0099
6	70	1992	36	Jamie St	Jaystone Ter	0	Termini	211		0.0132
6	70	1994	36	Jason Dr	Lum Ave	0	Termini	264		0.0165
6	70	1992	36	Jaystone Ter	Anna St	0	Pearl St	370	122-25	0.0232
6	70	1992	36	Jaystone Ter	Pearl St	0	Jamie St	370	122-25	0.0232
6	70	1992	36	Jaystone Ter	Jamie St	0	Goehl Rd	106	122-25	0.0066
6	70	1994	36	Jills Ct	Lum Ave	0	Termini	370		0.0232
6	70	2006	36	Julia Way	McKay Way	0	Termini	245		0.0153
6	70	1996	28	Lum Ave	Spring St	0	Porter St	106		0.0066
6	70	1979	34	Lum Ave	Porter St	0	Henry Ct / Henry St	686		0.0430
6	70	1996	40	Lum Ave	Henry Ct / Henry St	0	Anna St	950		0.0595
6	70	1996	40	Lum Ave	Anna St	0	Sunrise Ct	264		0.0165
6	70	1996	40	Lum Ave	Sunrise Ct	0	Jason Dr	158		0.0099
6	70	1996	40	Lum Ave	Jason Dr	0	Jills Ct	158		0.0099
6	70	1996	40	Lum Ave	Jills Ct	0	Goehl Rd	475		0.0297
6	70	1996	40	Lum Ave	Goehl Rd	0	Clarkson Rd	475		0.0297
6	70	1970	20	McKay Way	W Madison St / STH 19	0	Knowlton St	845	123-29	0.0529
6	70	1970	20	McKay Way	W Madison St / STH 19	845	Knowlton St	634	123-29	0.0397
6	70	1998	40	McKay Way	Knowlton St	0	Julia Way	504		0.0316
6	75	2006	40	McKay Way	Knowlton St	504	Julia Way	90		0.0056
6	70	2006	40	McKay Way	Knowlton St	594	Julia Way	77		0.0048

**City of Waterloo  
2021 WISLR Pavement Ratings**

Rating	Type	Year	Width	On Route	At Route	At Offset	Toward Route	Section Length	Local ID	Weighted Rating
6	75	2006	40	McKay Way	Knowlton St	671	Julia Way	15		0.0009
6	70	2006	40	McKay Way	Julia Way	0	Gene Dr	757		0.0474
6	70	2006	40	McKay Way	Gene Dr	0	Daniel Dr	876		0.0549
6	70	2006	40	McKay Way	Daniel Dr	0	Monroe St S	785		0.0492
6	65	1975	20	Mead St	Termini	0	Monroe St S	158		0.0099
6	70	1995	34	Monroe St S	Knowlton St	0	Milwaukee Ave	105		0.0066
6	70	1997	34	Monroe St S	Knowlton St	105	Milwaukee Ave	70		0.0044
6	70	2003	34	Monroe St S	Knowlton St	175	Milwaukee Ave	511	n/a	0.0320
6	70	2003	28	Monroe St S	Milwaukee Ave	0	W Polk St	739	n/a	0.0463
6	70	1961	34	Streator Ln	Riverside Dr	0	Bradford Dr	317		0.0199
6	70	1967	34	Streator Ln	Crestview Dr	0	Minnetonka Way	317		0.0199
6	70	1994	36	Sunrise Ct	Termini	0	Lum Ave	264		0.0165
6	55	1964	31	Taylor St	Harrison St	0	Jackson St	422		0.0264
6	65	1981	22	Taylor St	Jackson St	0	Termini	211		0.0132
6	65	1993	25	Taylor St	Termini	0	Mead St / Monroe St S	211		0.0132
6	70	2003	32	W Polk St	S Washington St	0	Monroe St S	370	177-50	0.0232
6	70	2003	32	W Polk St	Monroe St S	0	Jackson St	581	177-51	0.0364
7	70	2002	24	Bluegrass Trl	Termini	0	Goehl Rd / Lexington Way	158		0.0115
7	70	2020	36	Bluegrass Trl	Goehl Rd / Lexington Way	0	Lexington Way	106		0.0077
7	70	2001	34	Bradford Dr	Riverside Dr	0	Streator Ln	528		0.0386
7	70	2001	34	Bradford Dr	Streator Ln	0	W Dickenson St	370		0.0270
7	70	2001	34	Bradford Dr	W Dickenson St	0	Porter St	370		0.0270
7	70	2016	36	Canal Rd	W Madison St / STH 19	0	Cherry Ln / Canal Rd	2482	112-02	0.1813
7	70	2005	36	Derby Dr	Lexington Way	0	Termini	186		0.0136
7	65	2005	36	Lexington Way	Bluegrass Trl / Goehl Rd	0	Derby Dr	422		0.0308
7	65	2005	36	Lexington Way	Bluegrass Trl / Goehl Rd	422	Derby Dr	317		0.0232
7	65	2005	36	Lexington Way	Bluegrass Trl / Goehl Rd	739	Derby Dr	224		0.0164
7	65	2005	36	Lexington Way	Derby Dr	0	Bluegrass Trl	452		0.0330
7	65	2005	36	Lexington Way	Bluegrass Trl	0	Clarkson Rd	215		0.0157
7	55	2009	32	Lum Ave	Boorman St	0	E Dickenson St	317		0.0232
7	70	1996	28	Lum Ave	E Dickenson St	0	Spring St	317		0.0232
7	70	2016	36	Milwaukee Ave	Monroe St S	0	Lincoln St	422	123-41	0.0308
7	70	2016	36	Milwaukee Ave	Lincoln St	0	Jackson St	211	123-41	0.0154
7	70	2004	31	Park Ave	Boorman St	0	E Dickenson St	264	n/a	0.0193
7	70	2004	31	Park Ave	E Dickenson St	0	Spring St	106	n/a	0.0077
7	57	2004	31	Park Ave	E Dickenson St	106	Spring St	211		0.0154
7	70	1992	36	Pearl St	Jaystone Ter	0	Termini	211		0.0154
7	65	2009	32	Pierce St	S Washington St	0	Jefferson St	475	123-48	0.0347
7	55	2009	32	Pierce St	Bluegrass Trl / Goehl Rd	739	Adams St	422	123-48	0.0308
8	70	2009	32	Boorman St	STH 89	0	Lum Ave	264		0.0220
8	70	2009	32	Boorman St	Lum Ave	0	Park Ave	317		0.0265
8	70	2018	30	Cleveland St	Mill St	0	Hendricks St	898		0.0750
8	70	2018	36	Commercial Ave	Industrial Ln	53	Termini	470		0.0392
8	70	2018	30	Mill St	E Madison St / STH 19 / STH 89	0	Cleveland St	528		0.0441
8	70	2018	30	Mill St	Cleveland St	0	Termini	739		0.0617
8	70	1963	52	Pierce St	Railroad Ave	0	Termini	158		0.0132
8	70	1999	35	Porter St	Indian Hills Dr / Minnetonka Way	0	Crestview Dr	475		0.0397
8	65	1989	34	Porter St	Crestview Dr	0	Bradford Dr	264		0.0220
8	65	1989	34	Porter St	Bradford Dr	0	Edison St	317		0.0265
8	65	1989	34	Porter St	Edison St	0	STH 89	317		0.0265
8	70	2014	36	Railroad Ave	E Madison St / STH 89	0	Pierce St	581	142-01	0.0485
8	70	2014	36	Railroad Ave	Pierce St	0	Termini	53	142-01	0.0044
9	70	2020	36	Bluegrass Trl	Goehl Rd / Lexington Way	106	Lexington Way	1372		0.1289
9	70	2019	28	Edison St	Termini	0	Franklin St	158		0.0148
9	70	2019	28	Edison St	Franklin St	0	Streator Ln	370		0.0348
9	70	2019	28	Edison St	Streator Ln	0	W Dickenson St	422		0.0396
9	70	2019	31	Edison St	W Dickenson St	0	Porter St	422		0.0396
9	70	2019	30	Franklin St	STH 89	0	Edison St	370		0.0348
9	70	2020	37	Rood Ave	E Madison St / STH 19 / STH 89	0	Pierce St	475		0.0446
10	65	1981	34	Adams St	E Madison St / STH 19 / STH 89	0	Pierce St	422		0.0440
10	70	1962	34	Adams St	Pierce St	0	E Polk St	422		0.0440
10	70	1962	34	Adams St	E Polk St	0	Leschinger St	158		0.0165

**2021 Weighted Average  
Total Miles**

**5.0531  
18.15**

## City of Waterloo Road / Utility Out-Year Project Plan

As Approved By The Public Works & Property Committee, September 3, 2020

Year	Location	Description	Funding	Cost estimate (non-utility municipal share)
2021	Adams Street (project approved as part of 2021 budget)	Reconstruct using Railroad Ave as design template	Tax levy: storm sewer, street & pedestrian areas; Waterloo Utilities rate revenue: water, sewer & electric	See current estimate on website
2022	Jefferson Street	Full reconstruct	same as above, 2021	to be determined
2022	Tentative - Hendricks (pending grant award)	Full reconstruct	WisDOT funding and as described above	to be determined
2023	Waterloo Road	Road Resurfacing S Monroe Street to Sunset View Ln	same as above, 2021	to be determined
2024	Minnehaha Lane & Riverside Drive	<b>Minnehaha Ln:</b> Minnetonka to Indian Hills Drive <b>Riverside Dr:</b> Streator Ln to W Dickenson St	same as above, 2021	to be determined
2025	Van Buren Street	Reconstruct: W Polk Street to Knowlton ST	same as above, 2021	to be determined
2026	Taylor Street - North Van Buren Street	Full reconstruct	same as above, 2021	to be determined
2027	Maple Lane	to be determined	same as above, 2021	to be determined
2028	West Riverside Drive	to be determined	same as above, 2021	to be determined
2029	Henry Street	to be determined	same as above, 2021	to be determined
2030	Leschinger Street	to be determined	same as above, 2021	to be determined
2031	Jackson Street	to be determined	same as above, 2021	to be determined

PUBLIC WORKS DEPARTMENT FEE SCHEDULE VALUES AS POSTED ON WEBSITE

A CURRENT FEE SCHEDULE IS UNDERWAY. COMMENTS

? RECOMMENDED CHANGES?

**PUBLIC WORKS DEPARTMENT**

**Description**

**Fee**

Residential & commercial trash disposal

\$12.00 per month \$12.50 per month

Endloader with operator

\$95 per hour, 1-hour minimum

Truck or pick-up with operator

\$85 per hour, 1-hour minimum

Truck-wood chipper with two operators

\$125 per hour, 1-hour minimum

Tractor-mower with operator

\$75 per hour, 1-hour minimum

Riding lawn mower with operator

\$75 per hour, 1-hour minimum

Truck-snow plow and/or sander with operator

\$85 per hour, 1-hour minimum

Tractor/snow blower/blade with operator

\$75 per hour, 1-hour minimum

Snow shoveling and/or salting

\$95 per hour, 1-hour minimum

Street sweeper with operator

\$95 per hour, 1-hour minimum

Chain saw with operator

\$95 per hour, 1-hour minimum

Vactor sewer cleaning truck with operator

\$150 per hour, 1-hour minimum

Regular Hours Mon – Fri 7:00 a.m. – 3:30 p.m.

Vactor sewer cleaning truck with operator

\$200 per hour, non-regular hours

Welder with operator

\$95 per hour, 1-hour minimum

Paint marker with operator

\$65 per hour, 1-hour minimum plus material

Public works labor

\$65 per hour, 1-hour minimum

Grave Opening & Closing Services, City Cemetery

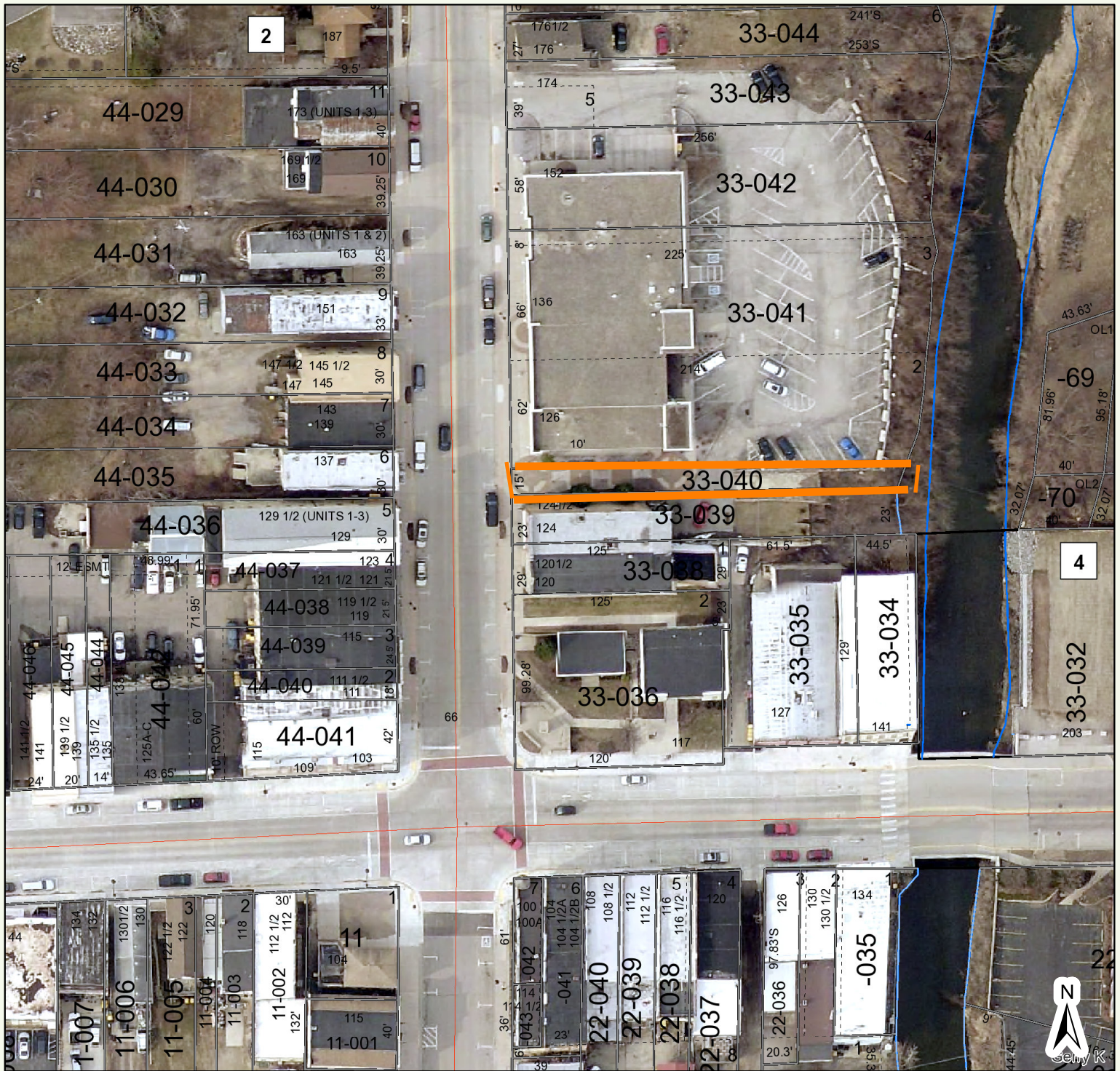
Meitners Land Service, LLC

\$550 per opening & closing + \$25 administration fee

\$260 per opening & closing for cremation + \$25  
administration fee



# City of Waterloo parcel 33-040 b



- |                     |                       |  |                    |             |
|---------------------|-----------------------|--|--------------------|-------------|
|                     | Description           |  | Rail Right of Ways | Tax Parcels |
|                     | Municipal Boundaries  |  | Road Right of Ways |             |
| <b>Parcel Lines</b> |                       |  |                    |             |
|                     | Property Boundary     |  | Section Lines      |             |
|                     | Old Lot/Meander Lines |  | Surface Water      |             |
|                     | Map Hooks             |  |                    |             |

Jefferson County Geographic Information System

DISCLAIMER: This map is not a substitute for an actual field survey or onsite investigation. The accuracy of this map is limited to the quality of the records from which it was assembled. Other inherent inaccuracies occur during the compilation process. Jefferson County makes no warranty whatsoever concerning this information.

80 40 0 80 Feet  
1 inch = 80 feet

Printed on: August 30, 2021

Author: Public User

# City of Waterloo, Wisconsin

## Capital Plan

2022 thru 2031

### PROJECTS & FUNDING SOURCES BY DEPARTMENT

Department	Project #	2022	2023	2024	2025	2026	2027	2028	2029	2030	2031	Total
<b>Public Works</b>												
Bobcat, Skid Steer Loader	400016						65,000					65,000
Chipper, Wood Bandit 200xp	400017		70,000									70,000
Mower, SCAG	400020		11,000					11,000				22,000
Roller, Wacker Unit	400021				8,000							8,000
Sweeper, Street Elgin	400022				160,000							160,000
Tractor, JD 2555	400023			80,000								80,000
Tractor, JD End Loader	400024				220,000							220,000
Tractor, X750 JD Lawn Mower	400025	20,000				20,000						40,000
Truck Dump Freightliner #2	400026									135,000		135,000
Truck, Dump Freightliner #5	400027							135,000				135,000
Truck, Dump Freightliner #7	400028				135,000							135,000
Truck, Ford F-550 (chipper)	400029					60,000						60,000
Truck, Pickup Chevy	400030						40,000					40,000
International Truck #1(Replace 2020 International)	400032	135,000										135,000
JD 1025R	400033									25,000		25,000
City Hall Parking Lot and Pedestrian Improvements	400034	0										0
Van Buren St	400036				650,000							650,000
Taylor St & north end Van Buren St	400037					650,000						650,000
Maple Drive	400038						650,000					650,000
West Riverside Drive	400039							650,000				650,000
Henry Street	400040								650,000			650,000
Leschinger Street	400041									650,000		650,000
Jackson Street	400042										650,000	650,000
Hendricks / 333 Portland Rd Improvements	412001	0		1,321,515								1,321,515
Jefferson St	dpr-05	1,157,328										1,157,328

Department	Project #	2022	2023	2024	2025	2026	2027	2028	2029	2030	2031	Total
Waterloo Road	dpw-06		650,000									650,000
Minnehaha Ln & Riverside Dr	dpw-07			650,000								650,000
<b>Public Works Total</b>		<b>1,312,328</b>	<b>731,000</b>	<b>2,051,515</b>	<b>1,173,000</b>	<b>730,000</b>	<b>755,000</b>	<b>796,000</b>	<b>650,000</b>	<b>810,000</b>	<b>650,000</b>	<b>9,658,843</b>
<i>Borrowing Proceeds</i>		155,000	456,257	1,326,772	898,257	455,257	480,257	521,257	375,257	535,257	375,257	5,578,828
<i>Property Taxes</i>		882,585										882,585
<i>State Aid - Transportation</i>		227,743	227,743	227,743	227,743	227,743	227,743	227,743	227,743	227,443	227,743	2,277,130
<i>State Aid -MSIP</i>				450,000								450,000
<i>Tax Incremental Financing Dist. #3</i>		0										0
<i>Wheel Tax</i>		47,000	47,000	47,000	47,000	47,000	47,000	47,000	47,000	47,000	47,000	470,000
<b>Public Works Total</b>		<b>1,312,328</b>	<b>731,000</b>	<b>2,051,515</b>	<b>1,173,000</b>	<b>730,000</b>	<b>755,000</b>	<b>796,000</b>	<b>650,000</b>	<b>809,700</b>	<b>650,000</b>	<b>9,658,543</b>
<b>Grand Total</b>		<b>1,312,328</b>	<b>731,000</b>	<b>2,051,515</b>	<b>1,173,000</b>	<b>730,000</b>	<b>755,000</b>	<b>796,000</b>	<b>650,000</b>	<b>810,000</b>	<b>650,000</b>	<b>9,658,843</b>



CITY OF WATERLOO	<div> DPW BUDGET CURRENTLY AT FINANCE COMMITTEE  SEE ACCOUNT DETAIL 100-53-5301-110 AND BEYOND </div>			F100 Exp					Page: 11
									August 23, 2021 4:14 PM
									GeneralLedgerPeriod.GLPeriod = 22 & GL0_tblAccount.AccountNumber = 100515110110{,}100515110151{,}100515110190{,}100515110199{,}100515110316{,}100515110330{,}100515111190{,}100515111191{,}10051511119
Acct#	Title		Step	Budget	Projected	Current Actual	Current Budget	PY Actual	PY Budget
100-52-5211-399	POLICE PATROL	MISC	2-Comm	750.00	0.00	595.45	750.00	704.24	750.00
100-52-5211-810	POLICE PATROL	OUTLAY EQUIP	2-Comm	1,000.00	0.00	0.00	1,000.00	295.69	1,000.00
100-52-5211-811	POLICE PATROL	OUTLAY DEFIBU	2-Comm	0.00	0.00	2,450.00	0.00	0.00	0.00
100-52-5211-815	POLICE PATROL	OUTLAY COMPUT	2-Comm	4,000.00	0.00	0.00	4,000.00	3,983.57	4,000.00
100-52-5211-819	POLICE PATROL	OUTLAY SQUAD	2-Comm	0.00	0.00	8.97	25,000.00	0.00	0.00
100-52-5240-290	BUILDING & OTHER INSPECTIONS		2-Comm	22,245.00	0.00	71,617.81	13,000.00	28,086.97	21,219.03
100-52-5250-341	EMERGENCY GOVT COMMUNICATION		2-Comm	4,500.00	0.00	2,768.85	4,500.00	3,633.00	4,500.00
	6/23/2021	Mike Tschanz		Per DS-Radio Update Completed					
100-52-5250-351	EMERGENCY GOVT	SIRENS MAINT	2-Comm	1,500.00	0.00	0.00	1,500.00	986.00	1,500.00
100-52-5250-354	EMERGENCY GOVT	MAINT GENERAT	2-Comm	125.00	0.00	0.00	125.00	228.39	125.00
100-52-5250-399	EMERGENCY GOVT	MISC	2-Comm	500.00	0.00	0.00	500.00	244.24	500.00
100-53-5301-110	PUBLIC WORKS WAGES/DIRECTOR		2-Comm	55,565.00	0.00	32,685.16	54,499.00	53,841.60	53,430.00
100-53-5301-111	PUBLIC WORKS	WAGES ASST DIR	2-Comm	46,020.00	0.00	17,848.70	45,115.00	45,389.22	44,230.00

CITY OF WATERLOO

F100 Exp

Page: 12

August 23, 2021 4:14 PM

GeneralLedgerPeriod.GLPeriod = 22 & GL0\_tblAccount.AccountNumber = 100515110110{,}100515110151{,}100515110190{,}100515110199{,}100515110316{,}100515110330{,}100515111190{,}100515111191{,}10051511119

Acct#	Title		Step	Budget	Projected	Current Actual	Current Budget	PY Actual	PY Budget
100-53-5301-112	PUBLIC WORKS	LONGEVITY	2-Comm	572.00	0.00	312.00	500.00	0.00	500.00
100-53-5301-120	PUBLIC WORKS WORKER	WAGES	2-Comm	87,785.00	0.00	56,991.87	102,327.00	88,125.93	100,320.00
100-53-5301-123	PUBLIC WORKS	OVERTIME	2-Comm	7,400.00	0.00	2,469.94	7,400.00	5,147.21	7,400.00
100-53-5301-124	PUBLIC WORKS	SEASONAL	2-Comm	11,140.00	0.00	7,918.04	0.00	9,822.28	0.00
100-53-5301-151	PUBLIC WORKS	SOC SEC	2-Comm	14,585.00	0.00	9,098.72	14,388.00	15,513.17	14,388.00
100-53-5301-152	PUBLIC WORKS	RETIREMENT	2-Comm	12,392.00	0.00	7,594.50	11,302.00	13,281.05	11,302.00
100-53-5301-153	PUBLIC WORKS	HEALTH INS	2-Comm	62,517.00	0.00	43,415.28	72,747.00	70,080.44	67,933.08
100-53-5301-154	PUBLIC WORKS INS	INC & LIFE	2-Comm	448.00	0.00	373.64	2,000.00	1,269.48	2,000.00
100-53-5310-215	ENG & ADMIN	PROF FEES	2-Comm	5,000.00	0.00	1,595.00	5,000.00	3,845.00	5,000.00
100-53-5310-216	ENG & ADMIN RELATED	STREET	2-Comm	0.00	0.00	0.00	0.00	747.25	0.00
100-53-5310-218	ENG & ADMIN INTERACTIVE	MAP	2-Comm	0.00	0.00	0.00	0.00	0.00	0.00
100-53-5324-331	MACH & EQUIP	UNIFORMS	2-Comm	3,500.00	0.00	2,379.48	3,500.00	3,667.09	3,500.00
100-53-5324-340	MACH & EQUIP	SUPPLIES	2-Comm	1,000.00	0.00	41.84	1,000.00	583.66	1,000.00
100-53-5324-342	MACH & EQUIP	GAS & OIL	2-Comm	23,500.00	0.00	8,654.97	16,000.00	17,488.50	20,000.00

CITY OF WATERLOO

F100 Exp

Page: 13

August 23, 2021 4:14 PM

GeneralLedgerPeriod.GLPeriod = 22 & GL0\_tblAccount.AccountNumber = 100515110110{,}100515110151{,}100515110190{,}100515110199{,}100515110316{,}100515110330{,}100515111190{,}100515111191{,}10051511119

Acct#	Title	Step	Budget	Projected	Current Actual	Current Budget	PY Actual	PY Budget
100-53-5324-343	MACH & EQUIP TOOLS	2-Comm	1,000.00	0.00	1,106.54	1,000.00	1,489.85	1,000.00
100-53-5324-354	MACH & EQUIP REPAIRS	2-Comm	350.00	0.00	0.00	350.00	0.00	350.00
100-53-5324-361	MACH & EQUIP REP TRUCK #1	2-Comm	500.00	0.00	0.00	950.00	1,205.52	950.00
100-53-5324-362	MACH & EQUIP REP 2555 TRACTOR	2-Comm	1,450.00	0.00	1,660.50	1,000.00	492.98	1,000.00
100-53-5324-363	M&E/REPAIRS/2018 SKID STEER	2-Comm	1,000.00	0.00	141.37	1,000.00	462.20	1,000.00
100-53-5324-364	MACH & EQUIP REP TRUCK #4	2-Comm	400.00	0.00	0.00	500.00	1,077.16	500.00
100-53-5324-365	MACH & EQUIP REP TRK#2-93	2-Comm	750.00	0.00	575.09	750.00	361.96	1,000.00
100-53-5324-366	MACH & EQUIP REP TRUCK #6	2-Comm	1,000.00	0.00	1,388.66	1,000.00	22.00	750.00
100-53-5324-367	MACH & EQUIP REP TRUCK #5	2-Comm	500.00	0.00	75.09	500.00	190.00	500.00
100-53-5324-368	MACH & EQUIP REP ENDLOADER	2-Comm	2,500.00	0.00	2,012.20	1,000.00	1,179.70	2,000.00
100-53-5324-369	MACH & EQUIP REP SWEEPER	2-Comm	2,500.00	0.00	106.55	2,000.00	2,092.49	3,000.00
100-53-5324-370	MACH & EQUIP REP FOGGER	2-Comm	0.00	0.00	0.00	0.00	0.00	0.00
100-53-5324-371	MACH & EQUIP REP VACTOR #3	2-Comm	0.00	0.00	0.00	0.00	0.00	0.00

GeneralLedgerPeriod.GLPeriod = 22 &amp; GL0\_tblAccount.AccountNumber = 100515110110{,}100515110151{,}100515110190{,}100515110199{,}100515110316{,}100515110330{,}100515111190{,}100515111191{,}10051511119

Acct#	Title	Step	Budget	Projected	Current Actual	Current Budget	PY Actual	PY Budget
100-53-5324-372	MACH & EQUIP MOWER	REP LAWN	2-Comm	0.00	0.00	0.00	0.00	0.00
100-53-5324-373	MACH & EQUIP WACK	REP ROLER	2-Comm	50.00	0.00	40.00	50.00	115.68
100-53-5324-374	MACH & EQUIP MOWER	REP RIDE	2-Comm	3,500.00	0.00	3,330.55	3,300.00	3,915.67
100-53-5324-375	MACH & EQUIP #7	REPAIRS TRK	2-Comm	500.00	0.00	3,667.47	500.00	441.82
100-53-5324-376	MACH & EQUIP	SAFETY EQUIP	2-Comm	6,000.00	0.00	3,789.75	6,000.00	4,597.90
100-53-5324-810	MACH & EQUIP	OUTLAY	2-Comm	1,000.00	0.00	0.00	500.00	141.22
100-53-5327-190	GARAGE & SHED	MTGS & SEM	2-Comm	500.00	0.00	0.00	500.00	473.11
100-53-5327-220	GARAGE & SHED	TELEPHONE	2-Comm	800.00	0.00	443.78	800.00	737.68
100-53-5327-221	GARAGE & SHED	ELECTRIC	2-Comm	4,000.00	0.00	2,185.23	4,000.00	3,441.30
100-53-5327-222	GARAGE & SHED	HEAT	2-Comm	4,000.00	0.00	2,492.12	3,500.00	2,892.88
100-53-5327-223	GARAGE & SHED	WATER & SEWER	2-Comm	3,000.00	0.00	2,029.60	2,200.00	2,602.24
100-53-5327-330	GARAGE & SHED	MILEAGE	2-Comm	0.00	0.00	0.00	0.00	0.00
100-53-5327-350	GARAGE & SHED	SUPPLIES	2-Comm	2,000.00	0.00	2,060.80	2,000.00	3,177.67

CITY OF WATERLOO

F100 Exp

Page: 15

August 23, 2021 4:14 PM

GeneralLedgerPeriod.GLPeriod = 22 & GL0\_tblAccount.AccountNumber = 100515110110{,}100515110151{,}100515110190{,}100515110199{,}100515110316{,}100515110330{,}100515111190{,}100515111191{,}10051511119

Acct#	Title	Step	Budget	Projected	Current Actual	Current Budget	PY Actual	PY Budget
100-53-5327-351	GARAGE & SHED	REP & MAINT 2-Comm	1,800.00	0.00	451.62	1,800.00	801.00	1,800.00
100-53-5327-360	GARAGE & SHED PHONE	MOBILE 2-Comm	0.00	0.00	0.00	0.00	0.00	0.00
100-53-5327-380	GARAGE & SHED	COMP SUPPLY&MAIN 2-Comm	500.00	0.00	403.28	864.00	1,148.07	500.00
100-53-5327-391	GARAGE & SHED	PEST CONTROL 2-Comm	100.00	0.00	0.00	100.00	23.96	100.00
100-53-5327-399	GARAGE & SHED	MISC 2-Comm	100.00	0.00	0.00	100.00	3.28	100.00
100-53-5330-232	ST REP & MAINT	REIMB CO 2-Comm	2,000.00	0.00	2,000.00	2,000.00	2,000.00	2,000.00
100-53-5330-371	ST REP & MAINT	BLACKTOP 2-Comm	4,500.00	0.00	1,502.21	4,500.00	4,135.40	4,500.00
100-53-5330-372	ST REP & MAINT	ROAD SEAL 2-Comm	0.00	0.00	0.00	0.00	0.00	0.00
100-53-5330-373	ST REP & MAINT	GRAV & STONE 2-Comm	1,000.00	0.00	105.00	1,000.00	660.66	1,000.00
100-53-5330-375	ST REP & MAINT	PARKING LOT 2-Comm	2,000.00	0.00	0.00	2,000.00	7,321.11	10,000.00
100-53-5330-399	ST REP & MAINT	MISC 2-Comm	0.00	0.00	37.47	0.00	0.00	0.00
100-53-5332-350	SNOW & ICE	SUPPLIES 2-Comm	2,500.00	0.00	274.97	2,000.00	917.25	2,500.00
100-53-5332-351	SNOW & ICE	REP & MAINT 2-Comm	4,000.00	0.00	1,220.36	4,000.00	5,290.53	4,000.00



CITY OF WATERLOO

F100 Exp

Page: 16

August 23, 2021 4:14 PM

GeneralLedgerPeriod.GLPeriod = 22 & GL0\_tblAccount.AccountNumber = 100515110110{,}100515110151{,}100515110190{,}100515110199{,}100515110316{,}100515110330{,}100515111190{,}100515111191{,}10051511119

Acct#	Title	Step	Budget	Projected	Current Actual	Current Budget	PY Actual	PY Budget
100-53-5332-352	SNOW & ICE SALT/SAND	2-Comm	42,000.00	0.00	21,554.67	38,000.00	30,507.58	35,500.00
100-53-5332-399	SNOW & ICE MISC	2-Comm	0.00	0.00	0.00	0.00	0.00	0.00
100-53-5332-810	SNOW & ICE OUTLAY	2-Comm	0.00	0.00	0.00	0.00	0.00	0.00
100-53-5342-291	ST LIGHTING PYMNTS TO UTIL	2-Comm	73,000.00	0.00	38,080.26	68,000.00	60,329.95	61,467.00
100-53-5343-811	SIDEWALKS OUTLAY	2-Comm	1,000.00	0.00	0.00	1,000.00	1,000.00	1,000.00
100-53-5344-350	STORM SEWERS SUPPLIES	2-Comm	1,000.00	0.00	99.29	500.00	74.90	1,000.00
100-53-5344-351	STORM SEWERS REP & MAINT	2-Comm	500.00	0.00	14.97	500.00	34.80	500.00
100-53-5344-399	STORM SEWERS MISC	2-Comm	0.00	0.00	0.00	0.00	0.00	0.00
100-53-5344-810	STORM SEWERS OUTLAY	2-Comm	0.00	0.00	0.00	0.00	0.00	0.00
100-53-5345-351	TRAFFIC CONTROL SUPPLIES	2-Comm	1,500.00	0.00	1,306.43	1,500.00	1,980.60	1,500.00
100-53-5345-391	TRAFFIC CONTROL PAINT	2-Comm	3,500.00	0.00	1,449.10	3,500.00	3,344.83	3,500.00
100-53-5345-392	TRAFFIC CONTROL FLASH MAINT	2-Comm	1,000.00	0.00	0.00	1,000.00	496.29	1,000.00
100-53-5345-399	TRAFFIC CONTROL MISC	2-Comm	0.00	0.00	77.00	0.00	0.00	0.00
100-53-5345-810	TRAFFIC CONTROL OUTLAY	2-Comm	0.00	0.00	0.00	0.00	0.00	0.00

CITY OF WATERLOO				F100 Exp			Page: 17 August 23, 2021 4:14 PM		
GeneralLedgerPeriod.GLPeriod = 22 & GL0_tblAccount.AccountNumber = 100515110110{,}100515110151{,}100515110190{,}100515110199{,}100515110316{,}100515110330{,}100515111190{,}100515111191{,}10051511119									
Acct#	Title	Step	Budget	Projected	Current Actual	Current Budget	PY Actual	PY Budget	
100-53-5345-817	TRAFFIC CONTROL OUTLAY SIGNS	2-Comm	500.00	0.00	0.00	500.00	0.00	600.00	
100-53-5346-399	BRDGS & CULV MISC	2-Comm	225.00	0.00	0.00	225.00	285.14	225.00	
100-53-5347-192	TREE & BRUSH TREE REMOVAL	2-Comm	2,500.00	0.00	2,000.00	2,500.00	3,900.00	3,500.00	
100-53-5347-193	TREE & BRUSH STUMP REMOVAL	2-Comm	500.00	0.00	0.00	500.00	0.00	1,800.00	
100-53-5347-342	TREE & BRUSH CHIPPER GAS	2-Comm	800.00	0.00	709.20	1,000.00	807.81	1,000.00	
100-53-5347-390	TREE & BRUSH TREE TRIMMING	2-Comm	500.00	0.00	0.00	500.00	31.98	1,200.00	
100-53-5347-392	TREE & BRUSH REP WD CHIPPER	2-Comm	1,000.00	0.00	320.00	1,000.00	762.45	1,000.00	
100-53-5347-399	TREE & BRUSH MISC	2-Comm	0.00	0.00	0.00	0.00	127.86	500.00	
100-53-5347-810	TREE & BRUSH OUTLAY 6/28/2021 Mike Tschanz	2-Comm	2,000.00	0.00	142.99	1,000.00	2,170.00	400.00	
100-53-5360-290	REFUSE COLLECT GARBAGE	2-Comm	123,608.00	0.00	70,073.27	104,627.10	102,693.24	123,608.00	
100-53-5360-291	REFUSE COLLECT WOOD/IRON	2-Comm	150.00	0.00	0.00	150.00	133.00	100.00	
100-53-5360-292	REFUSE COLLECT RECYCLE	2-Comm	48,132.00	0.00	46,660.32	69,751.40	68,285.58	48,132.00	
100-53-5361-230	SANITARY SEWERS TELEVISIONING	2-Comm	0.00	0.00	0.00	0.00	0.00	0.00	

CITY OF WATERLOO

F100 Exp

August 23, 2021 4:14 PM

GeneralLedgerPeriod.GLPeriod = 22 &amp; GL0\_tblAccount.AccountNumber = 100515110110{,}100515110151{,}100515110190{,}100515110199{,}100515110316{,}100515110330{,}100515111190{,}100515111191{,}10051511119

Acct#	Title	Step	Budget	Projected	Current Actual	Current Budget	PY Actual	PY Budget
100-53-5361-350	SANITARY SEWERS SUPPLIES	2-Comm	0.00	0.00	0.00	0.00	72.50	0.00
100-53-5361-351	SANITARY SEWERS REP & MAINT	2-Comm	0.00	0.00	0.00	0.00	0.00	0.00
100-53-5361-399	SANITARY SEWERS MISC	2-Comm	0.00	0.00	0.00	0.00	0.00	0.00
100-54-5412-297	ANIMAL CONTROL HUMANE SOCIE	2-Comm	4,652.00	0.00	4,651.72	4,400.00	4,651.72	4,651.72
100-55-5530-392	CELEB & ENTER XMAS DECOR	2-Comm	3,000.00	0.00	3,087.43	3,000.00	0.00	0.00
100-55-5530-399	CELEB & ENTER MISC	2-Comm	0.00	0.00	150.00	1,000.00	295.00	1,000.00
100-56-5621-354	WEED CONTROL MAINT DITCH MOWE	2-Comm	1,600.00	0.00	0.00	1,600.00	982.00	1,600.00
100-56-5621-399	WEED CONTROL MISC	2-Comm	1,000.00	0.00	315.00	1,000.00	864.47	1,000.00
100-56-5630-110	PLAN COMMISSION WAGES	2-Comm	1,050.00	0.00	315.00	1,050.00	555.00	1,050.00
100-56-5630-151	PLAN COMMISSION SOC SEC	2-Comm	81.00	0.00	24.09	81.00	42.49	80.33
100-56-5630-211	ECONOMIC DEVELOPMENT COUNTY	2-Comm	5,060.00	0.00	0.00	5,060.00	9,961.50	5,057.00
100-56-5630-215	ECONOMIC DEVELOPMENT CITY	2-Comm	0.00	0.00	0.00	0.00	550.00	0.00
100-56-5630-218	COMPREHENSIVE PLANNING GRANT	2-Comm	0.00	0.00	27.83	0.00	0.00	0.00

# City of Waterloo Public Works & Property Committee Annual Calendar (rev. 7/30/2021)

- ☐ **Meeting night: 1<sup>st</sup> Thursday of month at 6:00 pm**  
☐ **Monthly recurring: (1) review of Capital Projects; (2) monitor defined Progress Measures**

JANUARY
<input type="checkbox"/> Oversight of bid process for future year capital purchases & contract services
FEBRUARY
<input type="checkbox"/> Notify Mayor of reappointment interest
MARCH
<input type="checkbox"/> Identify grant application opportunities
APRIL
<input type="checkbox"/> Mayoral Committee appointments
MAY
<input type="checkbox"/> Review and realign Progress Measures as needed tying back to Comprehensive Plan
<input type="checkbox"/> Update annual calendar
<input type="checkbox"/> Tour of municipal facilities
<input type="checkbox"/> Public Works Director's Spring facility inspection report (added at Mayor's request)
JUNE
<input type="checkbox"/> Mayor's 2020 Budget start date.
JULY
<input type="checkbox"/> Traditional beginning of budget consideration with budget memo to department heads.
<input type="checkbox"/> § 53-14 Recommending updated multi-year capital improvement plan to Finance, Insurance & Personnel Committee
<input type="checkbox"/> Review DPW future year budget submittal
- Operational budget
<input checked="" type="checkbox"/> Programs & Services provided
- Capital Budget
<input checked="" type="checkbox"/> Street surface maintenance program
<input checked="" type="checkbox"/> Street/Utility reconstruction plan
AUGUST
<input type="checkbox"/> PASER review ( <u>P</u> avement <u>S</u> urface <u>E</u> valuation & <u>R</u> ating) – A 1-10 rating system for road pavement condition using visual inspection to evaluate pavement surface conditions [NOTE: Updated by KEG in odd-years]
SEPTEMBER
<input type="checkbox"/> Review of municipal facility needs (multi-year)
OCTOBER
<input type="checkbox"/> Evaluating the municipal solid waste management system; trash-recycling service performance & contract
<input type="checkbox"/> Oversight of bid process for future year capital purchases & contract services
<input type="checkbox"/> Review of municipal facility needs (multi-year)
<input type="checkbox"/> Public Works Director's Fall facility inspection report (added at Mayor's request)
NOVEMBER
<input type="checkbox"/> Oversight of bid process for future year capital purchases & contract services
<input type="checkbox"/> Review of municipal facility needs (multi-year)
<input type="checkbox"/> Review of City Forestry Plan
DECEMBER
<input type="checkbox"/> Oversight of bid process for future year capital purchases & contract services
<input type="checkbox"/> Impact fee needs assessment update based on prior months review
<input type="checkbox"/> Review of municipal facility needs (multi-year)

## NOTES FROM MUNICIPAL CODE

### § 53-14 Capital improvement program policy.

Policy. The City will make all capital improvements in accordance with an adopted capital improvement program. The City will develop a five-year plan for capital improvements and update it annually.

C. Procedure. The City of Waterloo Finance, Insurance and Personnel Committee or its designee shall, prior to each annual budget process, submit a capital improvement plan consisting of a project description, estimated costs and probable funding sources to the Council for its consideration. The Council shall act on the recommendations in a timely manner.

### § 332-1 Committee responsible for trees.

The Public Works and Property Committee shall, subject to the supervision and control of the Council, and except as herein provided, have jurisdiction and direction over all trees planted and growing in and upon City-owned property; that part of every street, the grade of which has been established, lying between the lot line and the curb; and trees on any property which may in any way have effect upon public property and upon the public welfare of the City, and for the planting, care, maintenance, protection and removal thereof. The Committee may make such rules and regulations as it may deem advisable for carrying out the purpose of this chapter.

### § 332-4 Removal of trees and stumps; replacement of trees.

A. All dead, hazardous and infected trees in the public right-of-way will be removed by the City at the expense of the City. All other trees in the public right-of-way shall be removed at the expense of the owner of the abutting property. If trees are removed by the owner of the abutting property, he shall cause all stumps to be removed and the area cleaned of all branches, leaves and other debris. If such is not done in a manner satisfactory to the Tree Committee, the Committee may order the Director of Public Works to do so and may charge the expense to the abutting property, pursuant to § 66.0627, Wis. Stats.

B. If a tree is removed from a tree lawn less than six feet wide, a tree will be provided by the City at 50% of the municipal cost to property owners and will be planted on the property owner's front lawn, providing that the Public Works Director determines that the property has sufficient front yard space to accommodate a tree. All municipally provided trees shall become the full responsibility of the property owner.

[Added 2-20-2014 by Ord. No. 2014-02]