

BIDDER'S COMPANY NAME: _____

CITY OF WATERLOO REQUEST FOR PROPOSALS

Sale of Tree Logs

for the following:

1. Sale of Tree Logs – Ash Tree lots in Firemen's Park

Submittal Deadline:
January 18, 2019, 11:00 A.M.

Prepared By:

Gabe Haberkorn
Parks Coordinator
City of Waterloo
136 North Monroe Street
Waterloo, WI 53594

v- 920-478-3025

f- 920-478-2021

email – parks@waterloowi.us

web – www.waterloowi.us

REQUEST FOR PROPOSAL REQUIREMENTS

General Guidelines

Using a silent auction bidding system, the City of Waterloo – Parks Department is accepting bids for the sale of tree logs. A total of 7 log lots will be auctioned off. Bidders can bid on one or more lots. Each lot will be sold separately to the highest Bidder. The City will not accept a lump sum bid for all five lots. The lots will be marked and the lots will be available for review prior to bidding. The tree logs are located at the wood storage location in Firemen’s Park at 500 Park Ave, Waterloo, WI 53594, see map on page 4. The logs are trunks and larger limbs from Ash Trees and will be sold as is. The logs were generated from the removal of City trees located in Waterloo Firemen’s Parks. Each log varies in length and diameter. The log size can range from 6” - 50” diameter and 4’ - 15’ in length. The highest bidder will be responsible for taking ownership of the entire lot. No logs can remain at the wood storage location. The City makes no representations or warranties about what is or is not contained in the logs. The City is requesting that each bidder thoroughly inspect each lot prior to bidding. The bidders will be allowed to process and/or cut logs at the wood storage location. Bidders must provide their own removal equipment and vehicles. City staff will need to be on site when the Bidder is preparing to cut or remove the material and the City will require 48 hours’ notice.

All logs will need to be removed by February 28, 2019 at 2:00pm. Payment for each bid will include all required sales taxes. The high Bidder for each lot will be required to make the full payment for each purchased lot prior to removing logs from the wood storage location. The payment should be made at City Hall, 136 N. Monroe Street, Waterloo, WI 53594. The payment must be cash or check made out to the City of Waterloo – Parks Department. Credit cards will not be accepted.

Quarantine

The City of Waterloo is located within the Emerald Ash Borer quarantine. The quarantine has been established by State and Federal Authorities. The owner of wood products must follow these guidelines. Upon purchasing the auction logs the Bidder becomes the owner of the wood material and must follow these guidelines. A large percentage of the logs that are being auctioned have been infested with Emerald Ash Borer. We do not have certified dates for when the logs were stock piled at the wood storage location. Please see pages 5 - 8 for quarantine details.

Bid Sheet

Bid packets are available at the Parks Department, 136 N. Monroe St, Waterloo, WI 53594. All bids shall be prepared in ink or typewritten including the appropriate signature. Bids will be accepted until 11:00 a.m. January 11, 2019. The bids should be submitted in a sealed envelope marked "Parks Department, Sale of Tree Logs" to the Parks Coordinator, 136 N. Monroe St, Waterloo, WI 53594.

The undersigned is submitting a silent bid to the City of Waterloo for tree logs. The Bidder may submit a bid for one or more log lots. The City makes no representations or warranties about what is or is not contained in the logs. The undersigned will not hold the City of Waterloo responsible for any damage that may occur to private vehicles during the loading process or while private vehicles operate on City property. The City will place a phone call to the high Bidder for each lot. If you would like a copy of the bidding results please include an email with your contact information.

- Lot #1: \$ _____ (Write in Dollar Amount)
- Lot #2: \$ _____ (Write in Dollar Amount)
- Lot #3: \$ _____ (Write in Dollar Amount)
- Lot #4: \$ _____ (Write in Dollar Amount)
- Lot #5: \$ _____ (Write in Dollar Amount)
- Lot #6: \$ _____ (Write in Dollar Amount)
- Lot #7: \$ _____ (Write in Dollar Amount)

Location Contact for all work: Parks Coordinator Gabe Haberkorn, 920-478-3025
Department Public Works Director Chad Yerges, 920-478-9797

SUBMITTAL SIGNATURE & INFORMATION

Provide a proposal that includes all contact information listed below. Proposals must be signed by an official authorized to bind the provider to its provisions for at least a period of 60 days.

_____ Signature	_____ Company Name
_____ Print Name	_____ Company Address
_____ Title	_____ City State Zip
_____ Telephone #	_____ Email

DISCLAIMERS

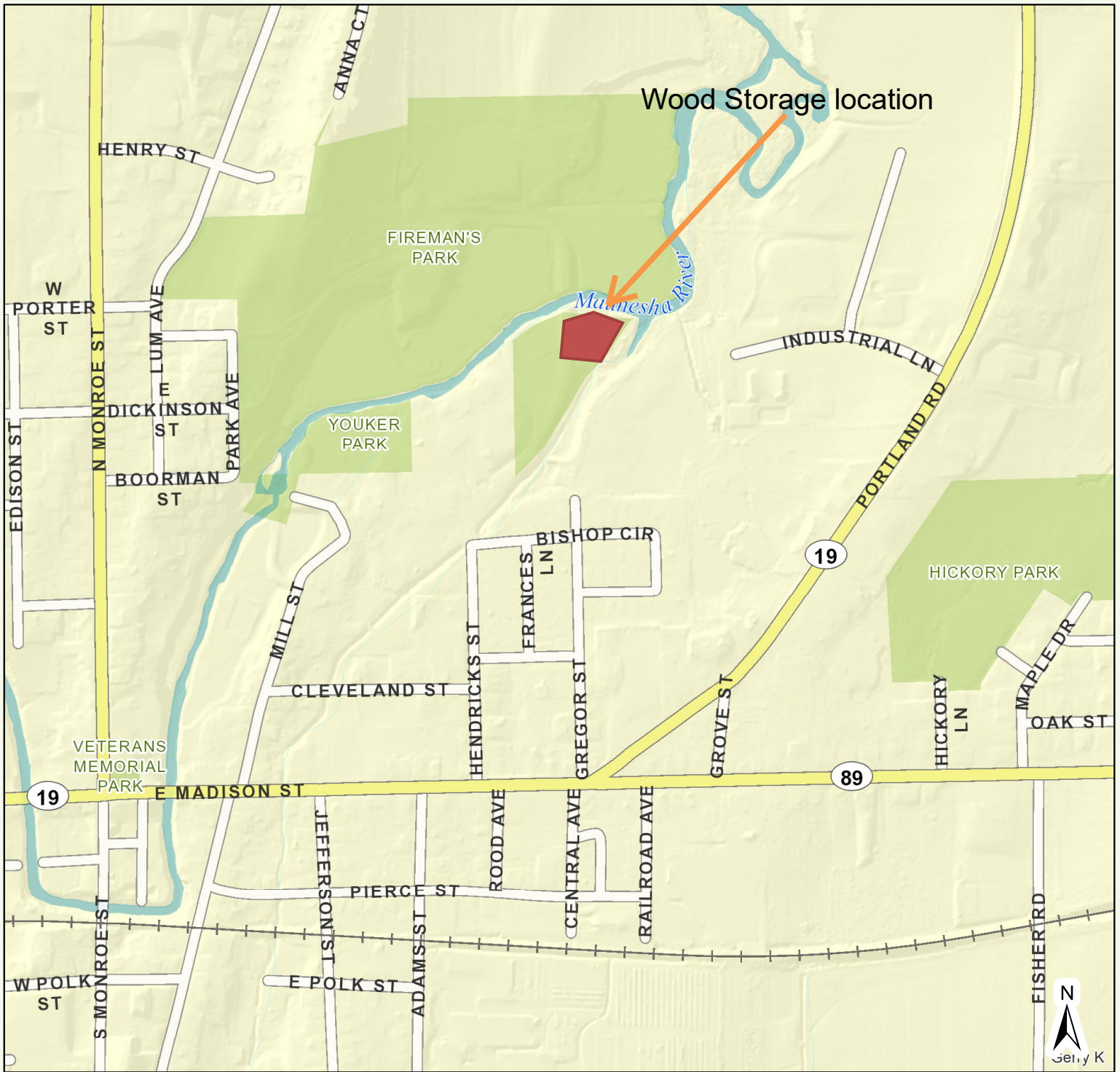
The City reserves the right to seek clarification on any aspect of a proposal and to remove from consideration any proposal that, in the City's sole discretion, has deficiencies. In addition, the City reserves the right to enter into negotiations with one or more respondents. In addition, the City reserves the right to refuse any and all bids.

CONTACT & SUBMITTAL INFORMATION

Contact Mo Hansen at 920-478-3025 should you have specific questions regarding the information we are requesting.

Sealed submittals can be delivered on or before the date on the cover page to the Waterloo Park Coordinator's Office, 136 North Monroe Street, Waterloo, Wisconsin 53594.

Jefferson County Land Information



State and Federal Quarantines

What is Quarantine:

An EAB Quarantine is a system of rules intended to help prevent the spread of EAB. The Rules Restrict the movement of firewood and ash products out of quarantined areas. Quarantines are Administered by the USDA Animal and Plant Health Inspection Services and the Wisconsin Department of Agriculture, Trade and Consumer Protection.



Why are quarantines important?

When people move infested firewood or anything else that might be hiding emerald ash borer (nursery stock, timber, pallets, etc.), the insect gets a free ride into new, likely uninfested areas. The chances of this happening increase when those things are moving out of areas that are known to be infested with EAB. Quarantines restrict this movement to reduce the spread of the pest.

Quarantines in Wisconsin

All Wisconsin counties and some tribal lands are under quarantine for emerald ash borers.

*The regulations on ash material and hardwood firewood also apply to other quarantined states, including Illinois, Ohio, Indiana, and Michigan

How does a county become quarantined?

When an EAB find is confirmed, the county where the find is located will be quarantined. If the find is located near neighboring counties, those counties also will be quarantined.

EAB Regulations

It is illegal to move or transport ash material, the emerald ash borer, and hardwood firewood from EAB quarantined areas to a non-quarantined area without a compliance agreement issued by WI Department of Agriculture, Trade and Consumer Protection. Regulated items include cut hardwood (non-coniferous) firewood, ash logs, ash mulch or bark fragments larger than an inch in diameter, or ash nursery stock (administrative rule ATCP 21).

DNR restricts firewood movement onto DNR managed properties in Wisconsin to prevent the spread of EAB to Wisconsin forests and recreational areas.

Exception: Firewood can be transported out of a quarantined area if it is from a firewood vendor certified by the WI Department of Agriculture, Trade and Consumer Protection.

Hardwood firewood, or ash material such as logs, mulch or nursery stock can be moved into or within the quarantined areas without penalty, but overall, firewood movement is a bad idea. Many invasive forest pests and diseases are inadvertently transported on firewood. Moving firewood can put the trees at your destination at risk. Follow recommendations to reduce the spread of EAB in potentially infested wood – to reduce the spread even within quarantined areas.

EAB Quarantine Map



All Wisconsin counties are now under quarantine, as well as some tribal lands. Dark gray areas are tribal lands that are quarantined. Light gray areas are not quarantined.